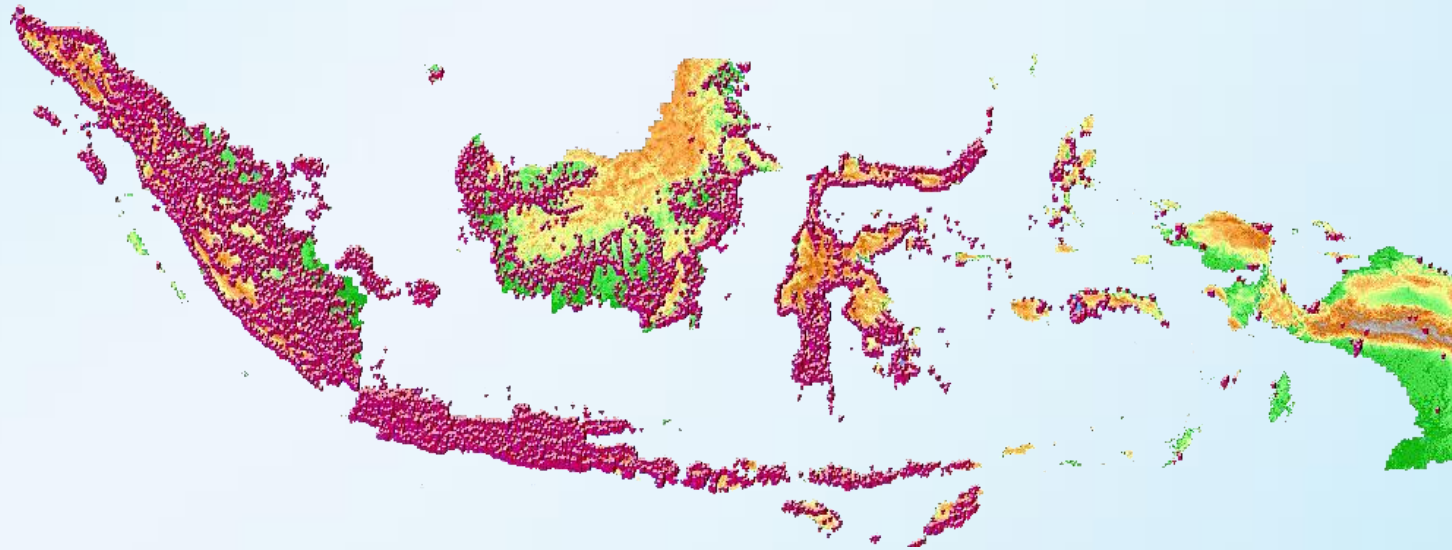


# Infografis

## Data Izin Penggunaan Frekuensi Radio Microwave Link & Penyiaran Nasional Tahun 2017



Direktorat Operasi Sumber Daya  
Direktorat Jenderal Sumber Daya dan Perangkat Pos dan Informatika  
Kementerian Komunikasi dan Informatika

KOMINFO

# Pengantar



**Bismillaahirrahmaanirrahiim**

**Syukur Alhamdulillah senantiasa dipanjatkan kepada Allah Subhanahu wa ta'ala Tuhan semesta alam yang telah mencurahkan hidayah dan inayah-Nya yang tiada henti-hentinya sehingga pembuatan infografis ini dapat dilakukan dengan baik. Infografis Direktorat Operasi Sumber Daya merupakan upaya untuk memberikan nilai tambah atas informasi Izin Stasiun Radio yang dikelola oleh Direktorat Operasi Sumber Daya.**

**Melalui infografis ini diharapkan penggunaanya dapat melihat nilai tambah data ISR melalui tampilan dan pemetaan visual dan untuk selanjutnya dapat dimanfaatkan dalam pengambilan kebijakan untuk kepentingan bidangnya.**

**Pada kesempatan ini baru dapat ditampilkan infografis terkait data microwave link dan data penyiaran. Diharapkan kedepannya akan banyak lagi data layanan dan indikator serta variabel bidang operasi sumber daya yang dapat disajikan dalam infografis sehingga dimensi-dimensi informasi yang disajikan lebih variatif untuk menggambarkan lebih banyak informasi dari data ISR yang ada sehingga lebih memudahkan dalam pemanfaatan pengambilan keputusan.**

**Terima kasih kami sampaikan kepada semua pihak yang telah memberikan dukungan dan bantuannya sehingga infografis ini dapat disajikan dan mohon maaf apabila terdapat kekeliruan dan kekurangan.**

**Salam,**

**Direktur Operasi Sumber Daya**

**DR. DWI HANDOKO, M. Eng.**

# Executive Summary

## Microwave Link

Microwave Link merupakan media transmisi nirkabel penghubung antar Base Station, Backbone, Backhaul, dll. sebagai media alternatif selain Fiber Optik.

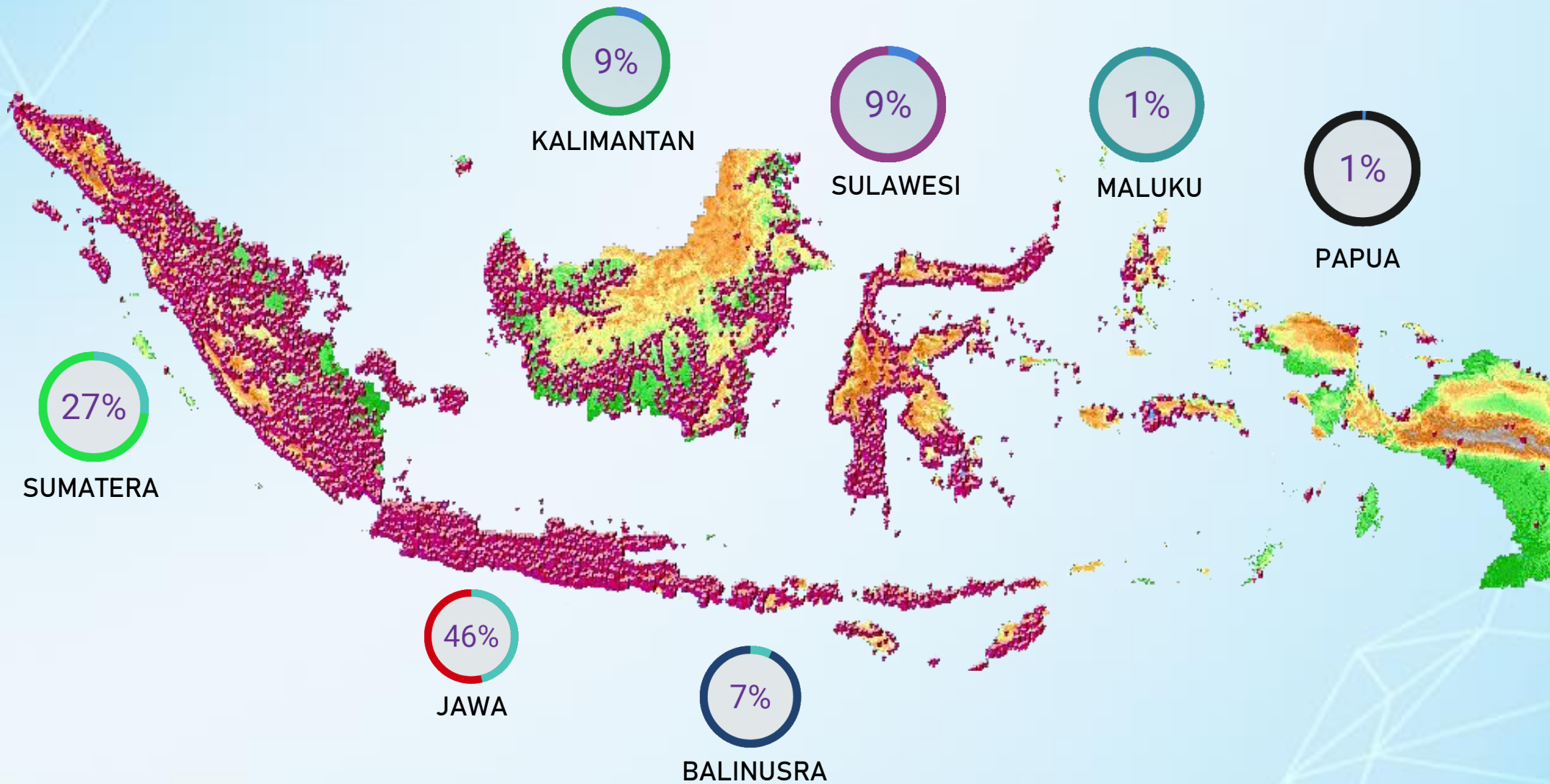
Pada Tahun 2017 terdapat 312.342 ISR dengan total bandwidth 7.72 Juta MHz dan distribusi wilayah lokasi stasiun radio di Jawa (46%), Sumatera (27%), Kalimantan (9%), Sulawesi (9%), Balinusra (7%), dan Maluku & Papua (2%).

## Penyiaran

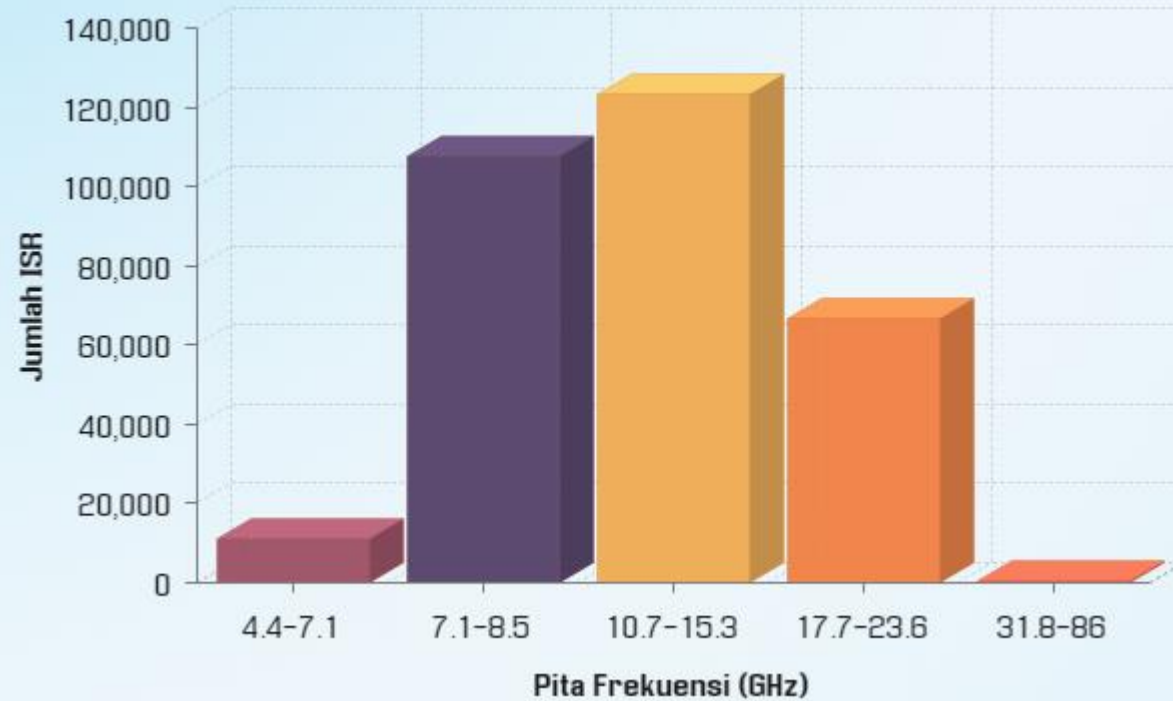
Radio dan TV Siaran mempunyai peranan yang sangat strategis sebagai media transmisi untuk keperluan diseminasi informasi yang dapat diakses secara langsung oleh publik.

Pada Tahun 2017 terdapat 3554 ISR dengan total ISR FM 2727 dan total ISR TV 827 serta distribusi wilayah lokasi stasiun radio di Jawa (FM : 36,7%, TV : 29,4%), Sumatera (FM : 30,2%, TV : 27,7%), Kalimantan (FM : 10,4%, TV : 12,9%), Sulawesi (FM : 10,3%, TV : 14,4%), Balinusra (FM : 7,4%, TV : 6,7%), Maluku (FM : 1,8%, TV : 4,1%) dan Papua (FM : 3,1%, TV : 4,8%).

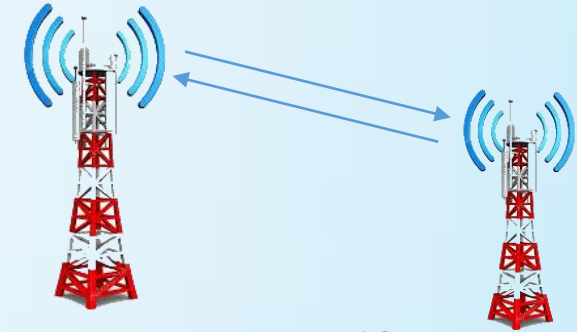
# Peta Sebaran Stasiun Radio Microwave Link Nasional



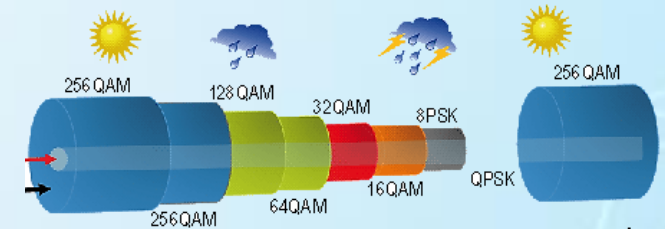
# Statistik Stasiun Radio Microwave Link



Tabel Penggunaan Pita Frekuensi Radio Microwave Link



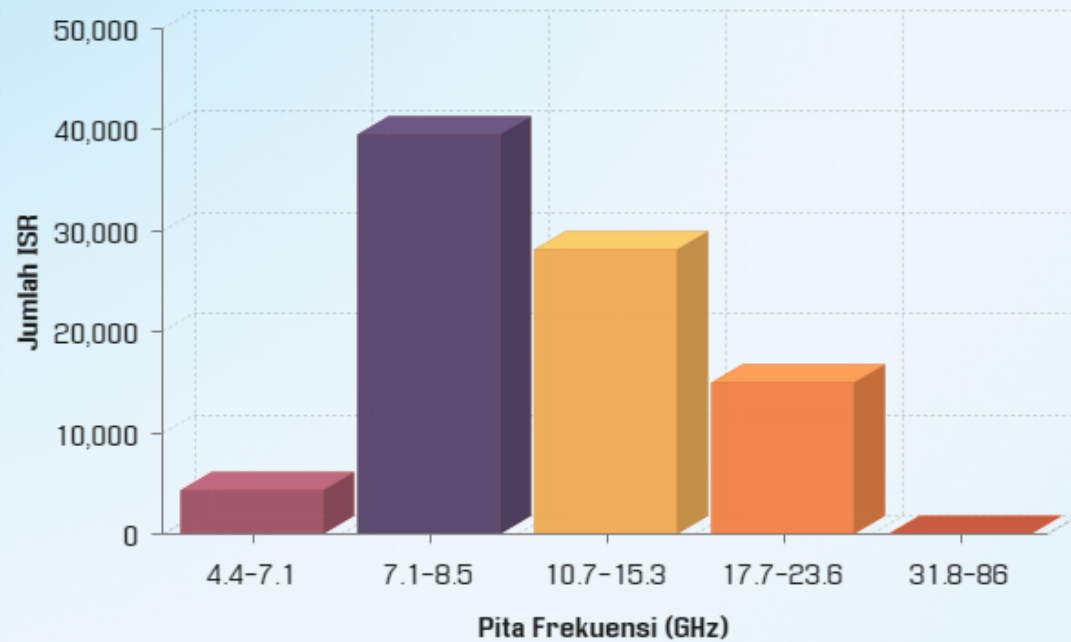
312.342 ISR  
Microwave Link



7.72 Juta MHz  
(Total Bandwidth =  $\sum$  BW ISR)

# Sumatera

Peta Sebaran Stasiun Radio Microwave Link



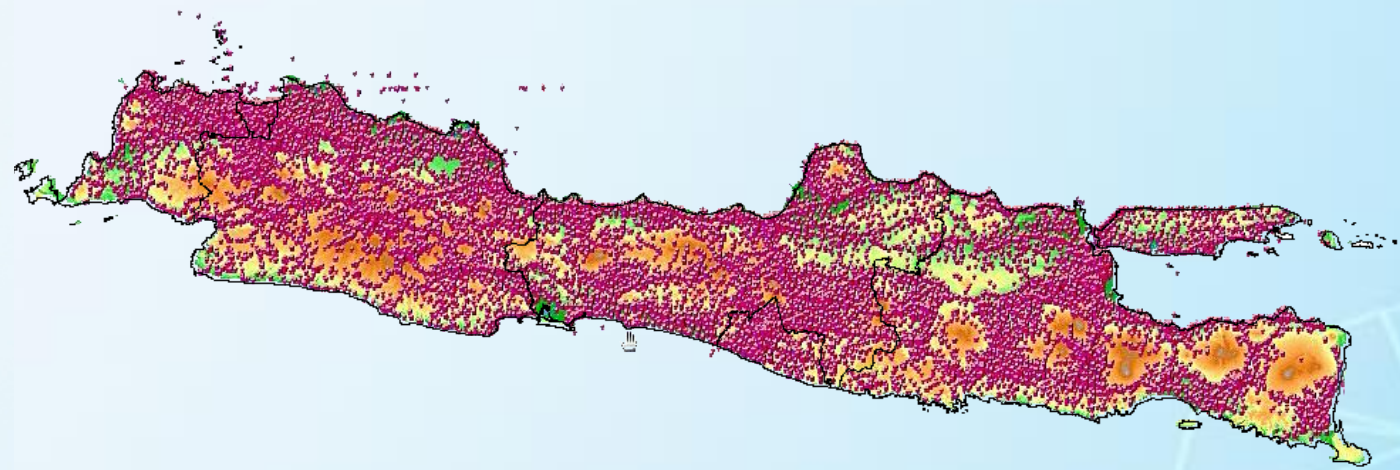
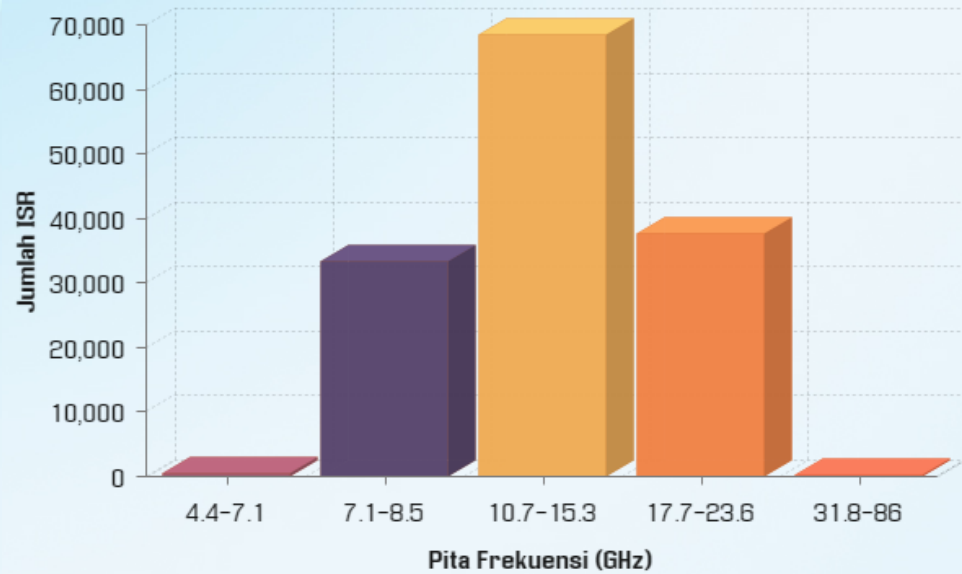
**83.704 ISR**  
**Microwave Link**

**2,05 Juta MHz**  
**(Bandwidth =  $\sum$  BW ISR)**



# Jawa

## Peta Sebaran Stasiun Radio Microwave Link

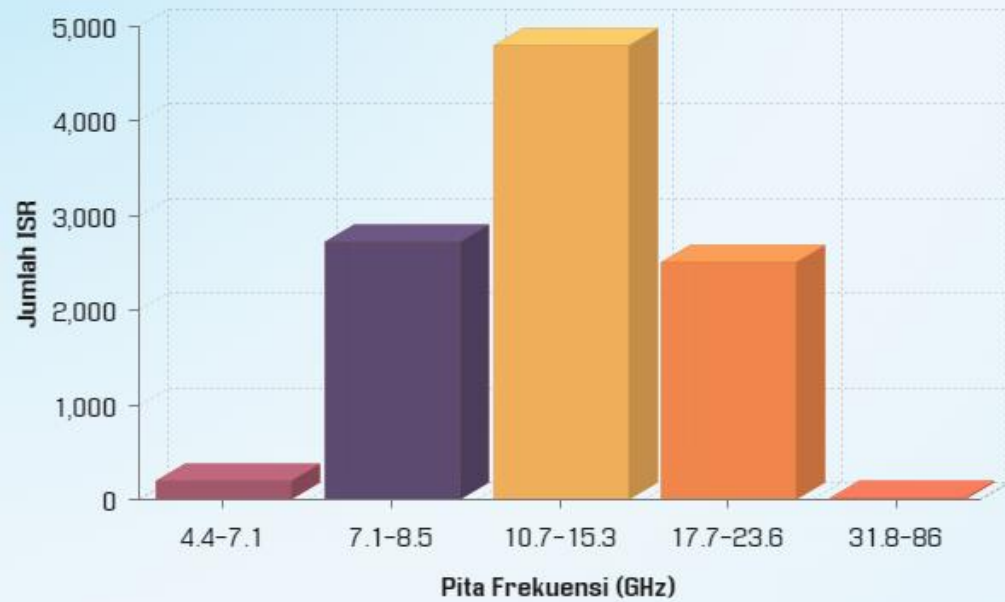


**141.754 ISR  
Microwave Link**

**3,40 Juta MHz  
(Bandwidth =  $\sum$  BW ISR)**

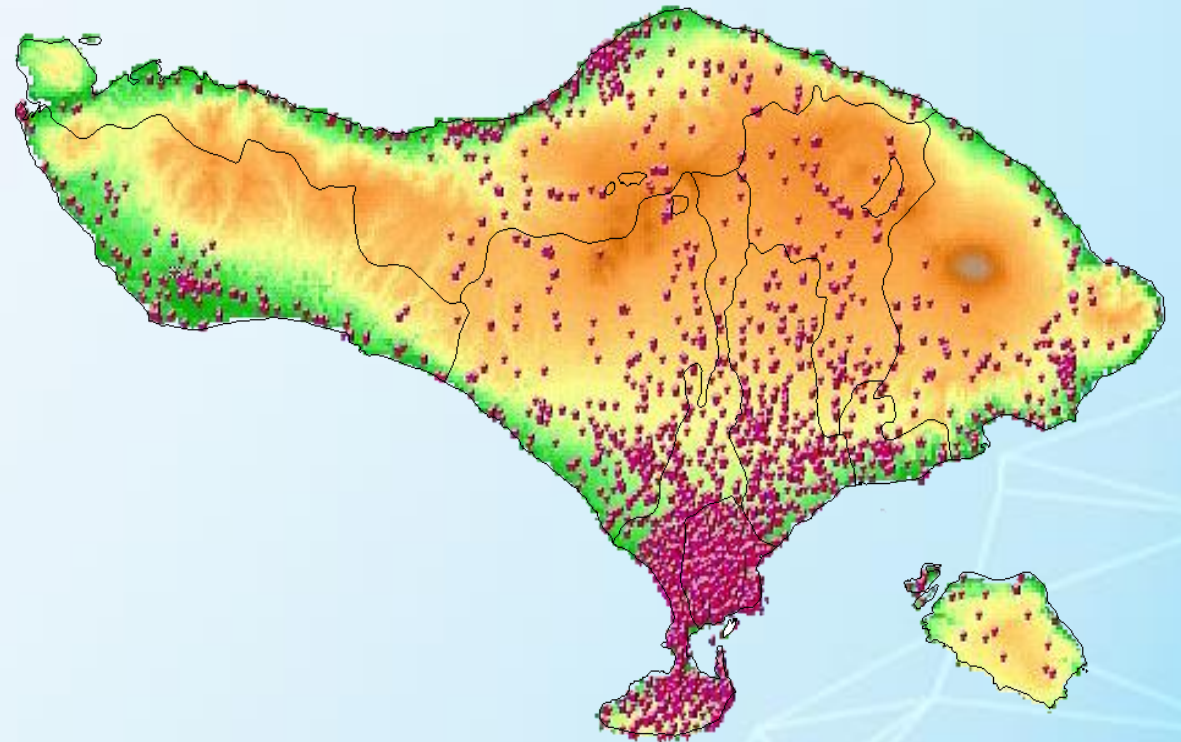
# Bali

## Peta Sebaran Stasiun Radio Microwave Link



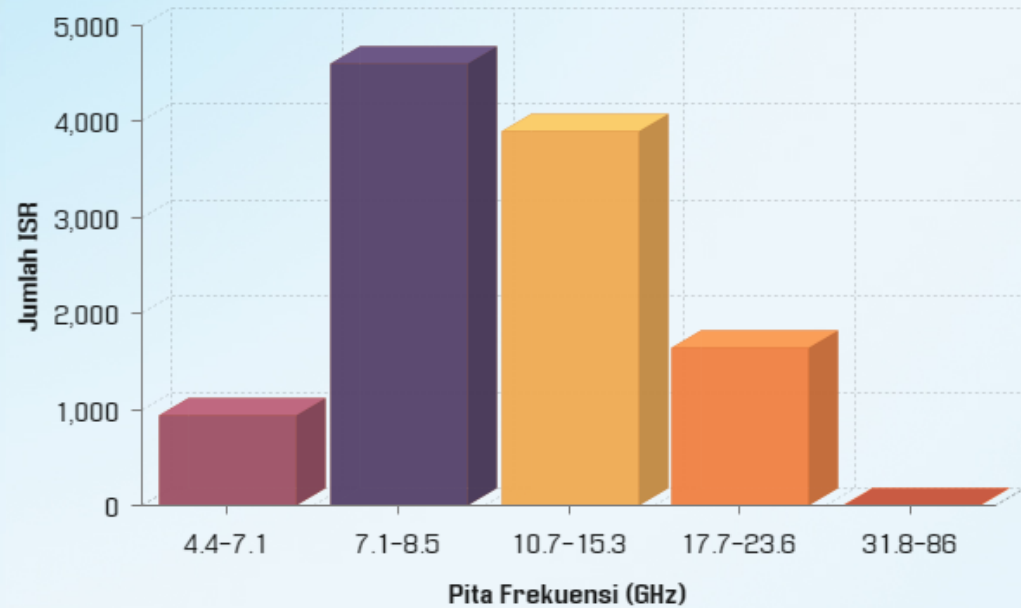
**10.474 ISR**  
**Microwave Link**

**273,27 Ribu MHz**  
**(Bandwidth =  $\sum$  BW ISR)**



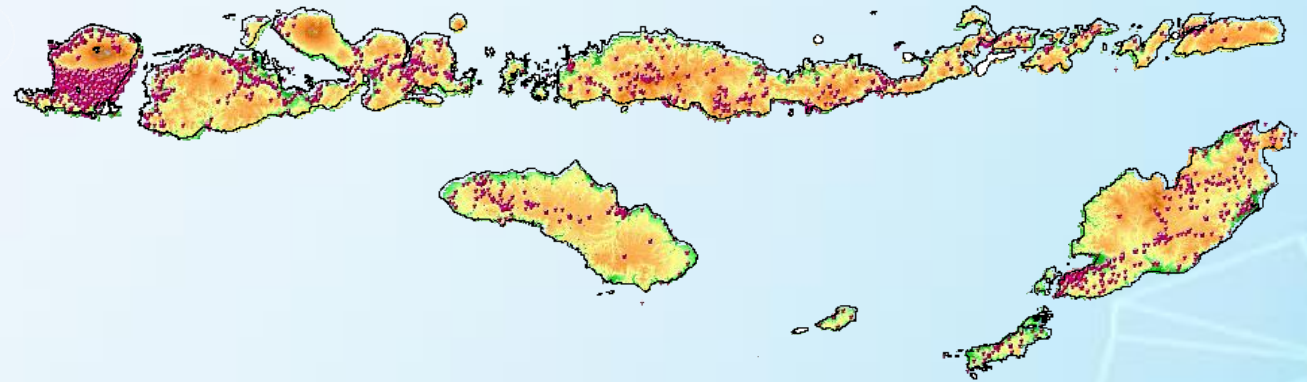
# Nusa Tenggara

Peta Sebaran Stasiun Radio Microwave Link



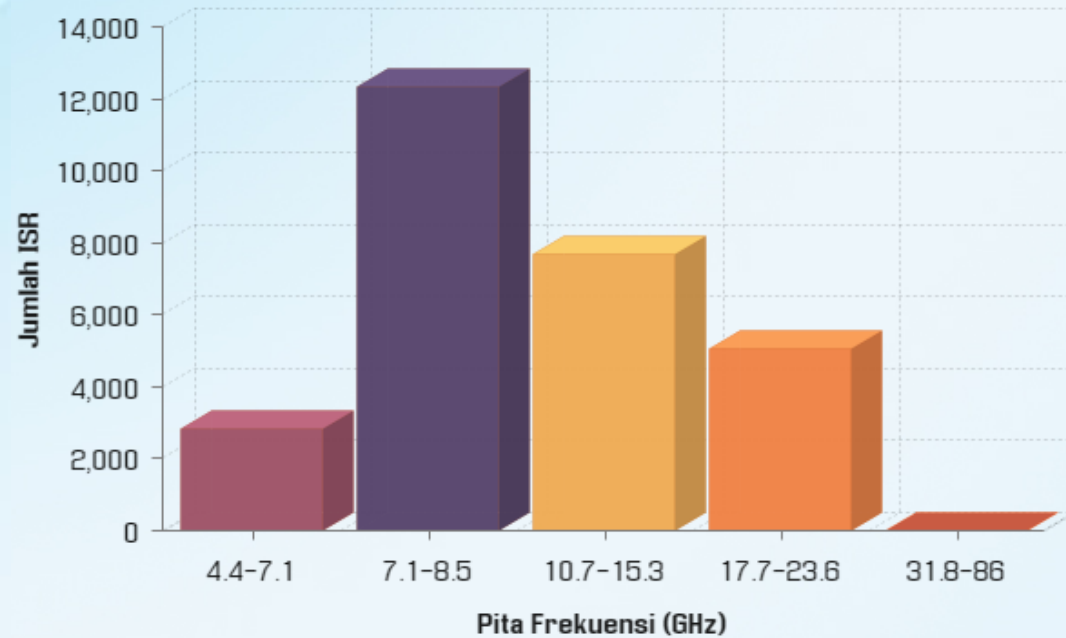
**12.141 ISR**  
**Microwave Link**

**331,46 Ribu MHz**  
**(Bandwidth =  $\sum$  BW ISR)**



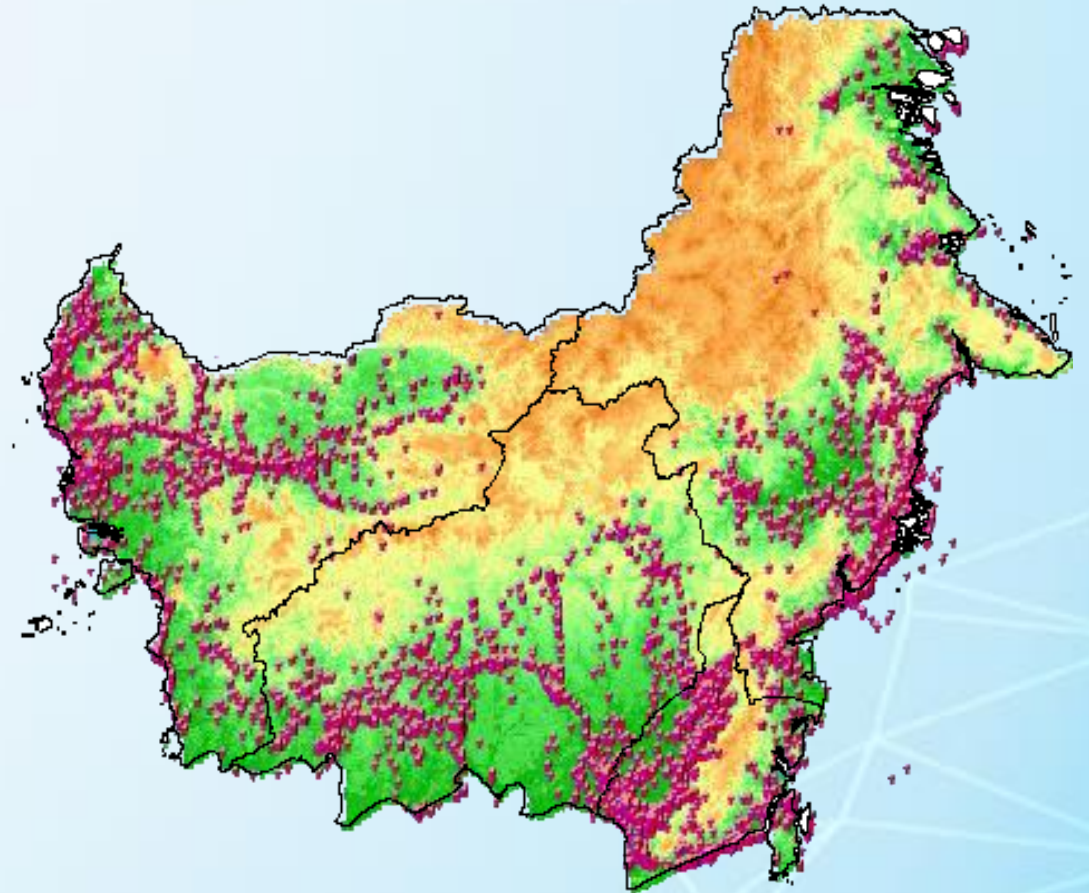
# Kalimantan

Peta Sebaran Stasiun Radio Microwave Link



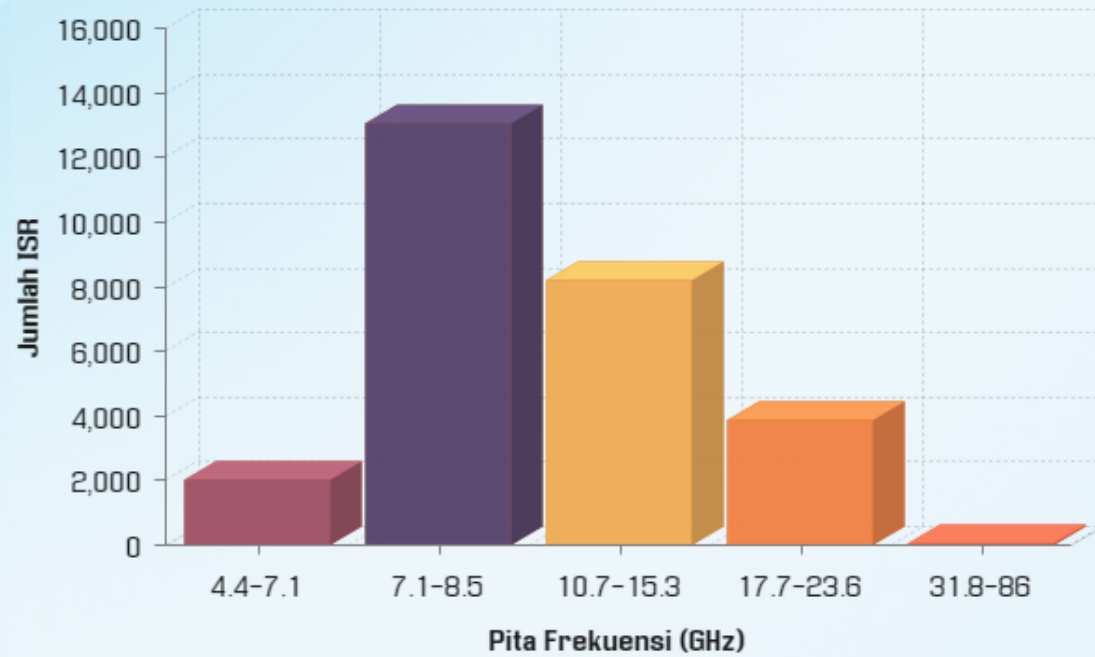
**28.770 ISR**  
**Microwave Link**

**754,82 Ribu MHz**  
**(Bandwidth =  $\sum$  BW ISR)**



# Sulawesi

Peta Sebaran Stasiun Radio Microwave Link



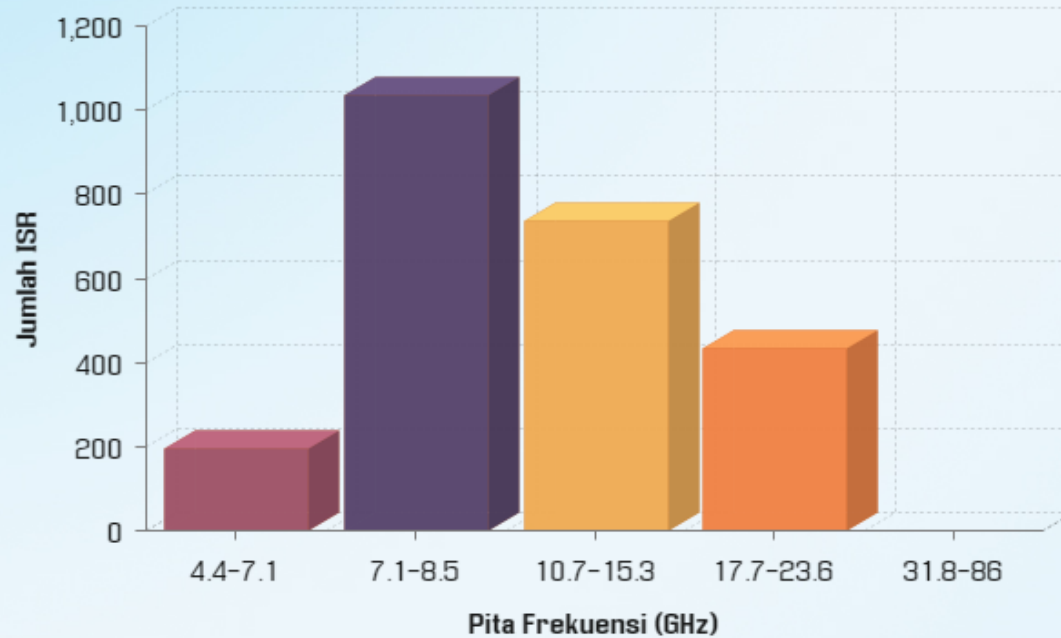
**29.157 ISR**  
**Microwave Link**

**762,51 Ribu MHz**  
**(Bandwidth =  $\sum$  BW ISR)**



# Maluku

Peta Sebaran Stasiun Radio Microwave Link



**2.456 ISR**  
**Microwave Link**

**69,54 Ribu MHz**  
**(Bandwidth =  $\sum$  BW ISR)**



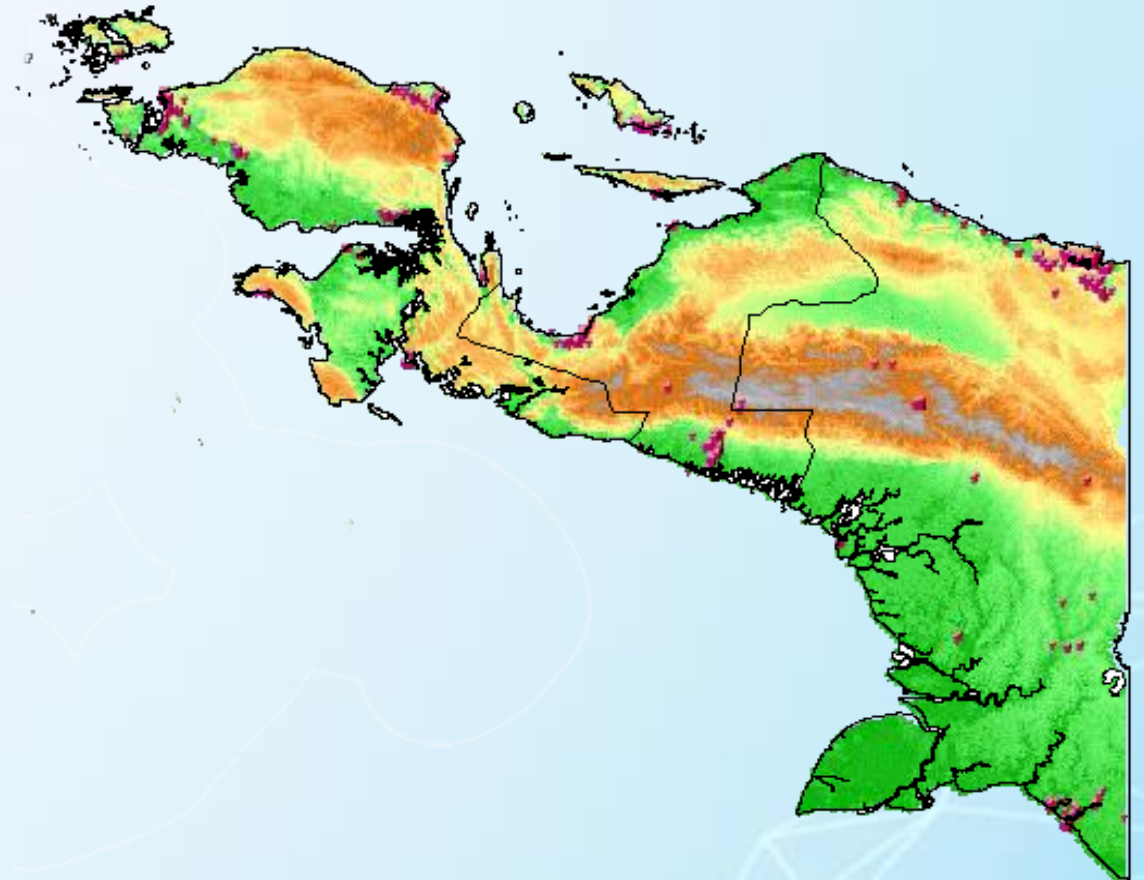
# Papua

Peta Sebaran Stasiun Radio Microwave Link

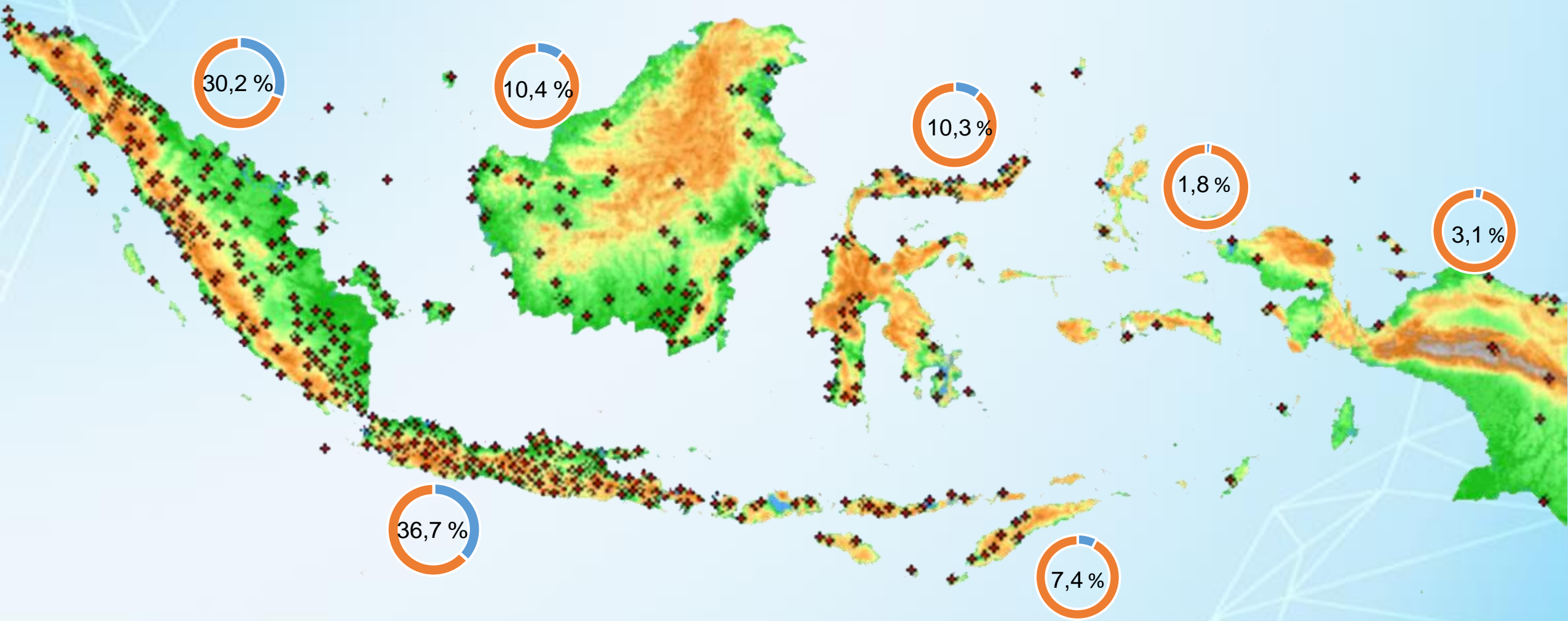


**2.991 ISR**  
**Microwave Link**

**80,52 Ribu MHz**  
**(Bandwidth =  $\sum$  BW ISR)**

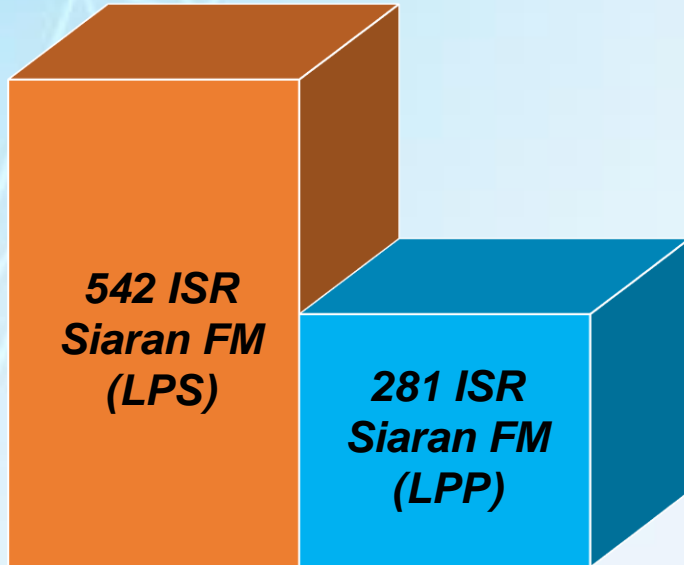


# Peta Sebaran Stasiun Radio Siaran FM Nasional

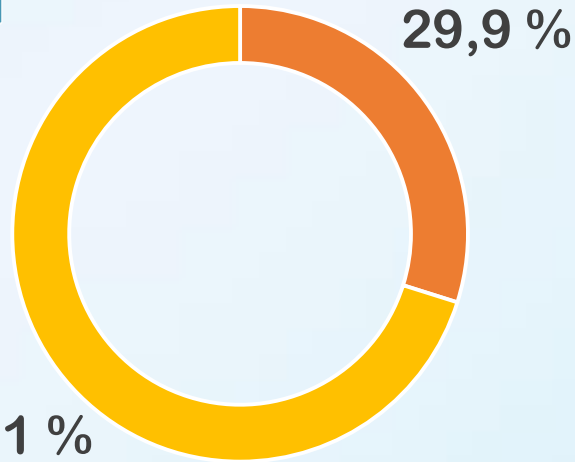


# Sumatera

## Coverage Stasiun Radio Siaran FM

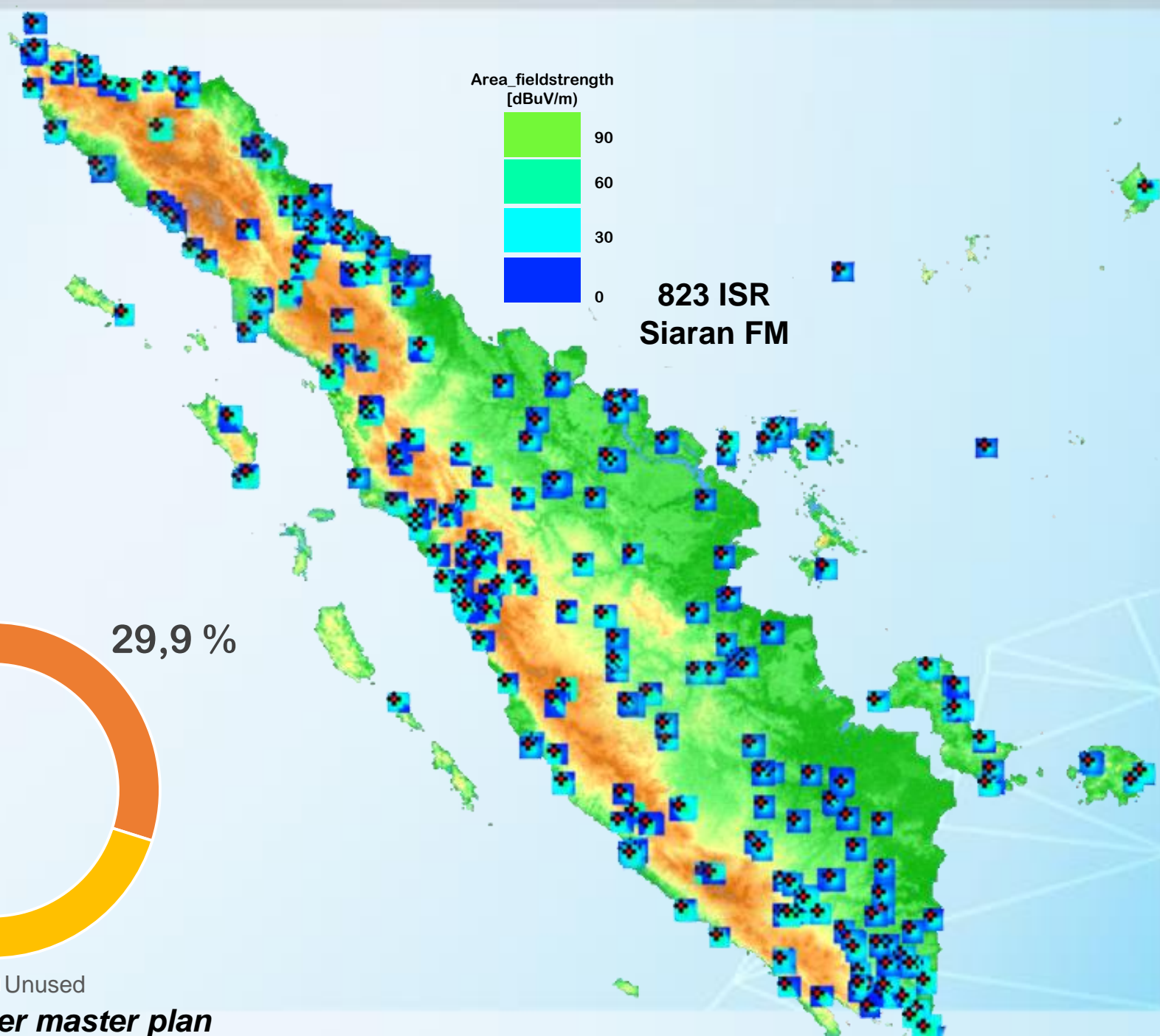


■ LPS ■ LPP



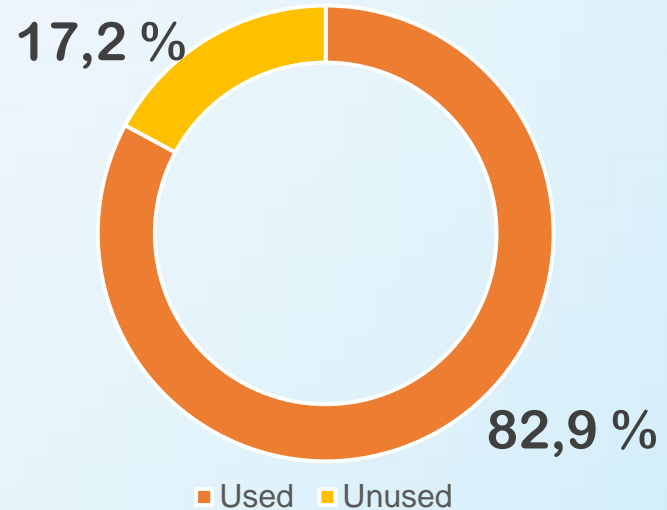
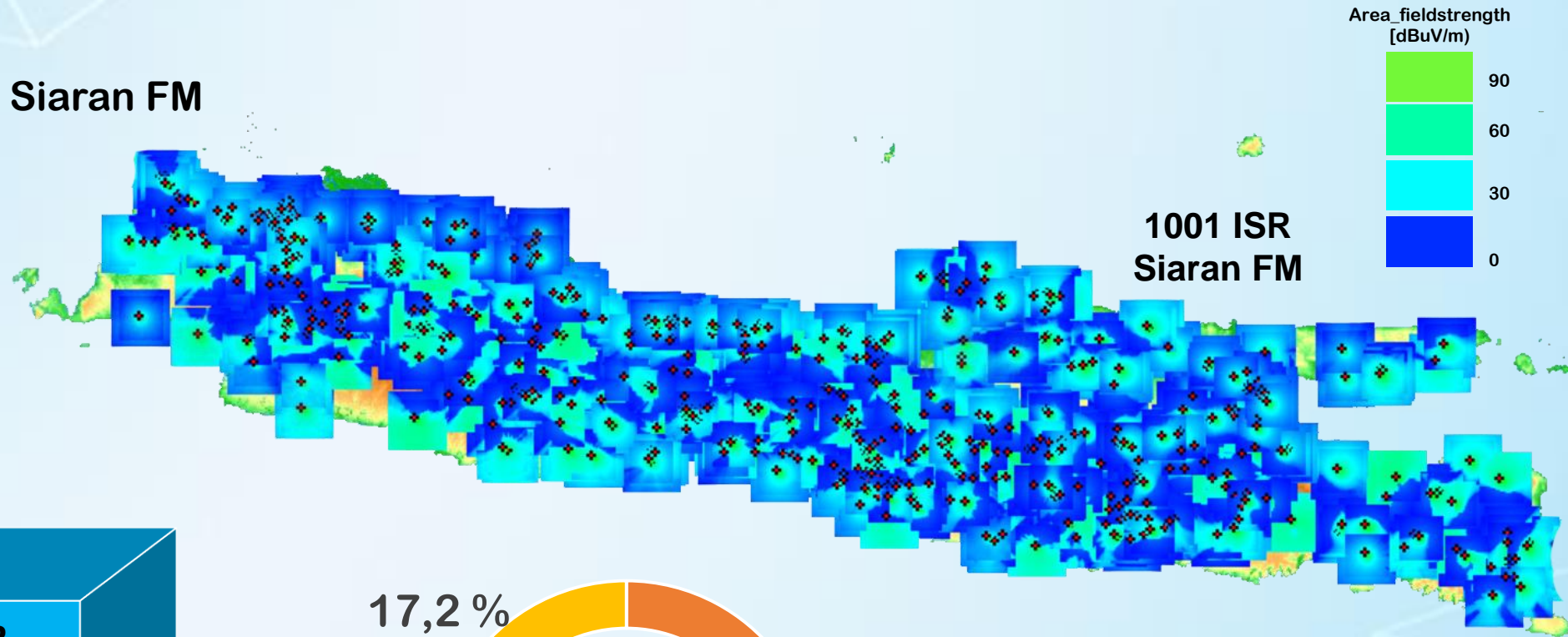
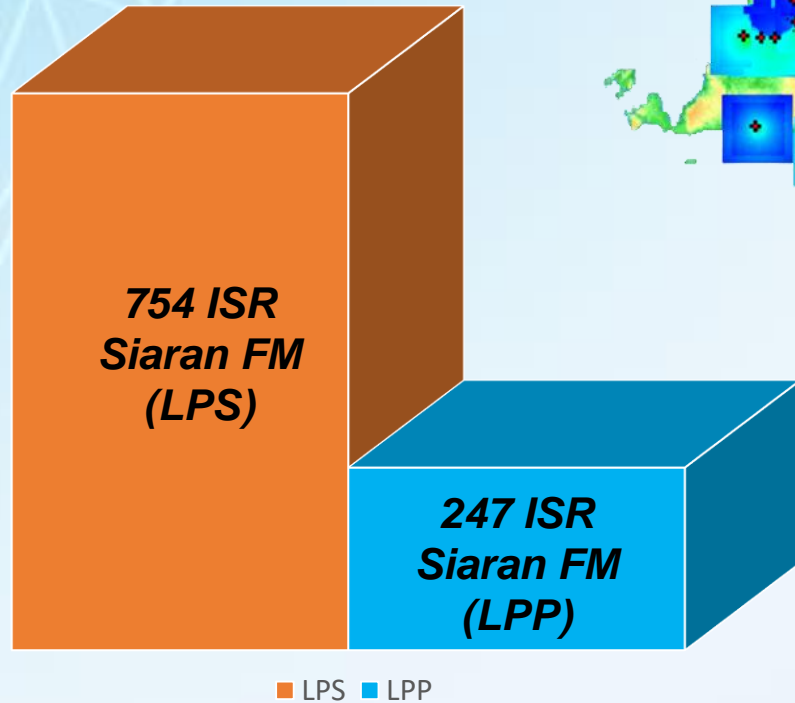
■ Used ■ Unused

**Utilitas kanal per master plan**



# Jawa

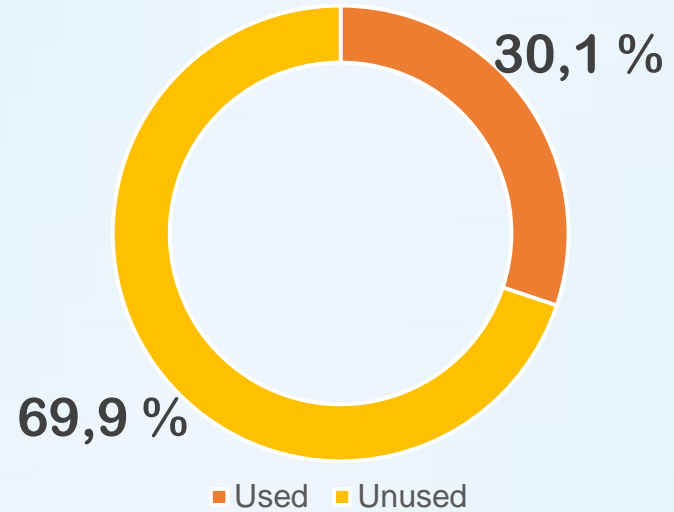
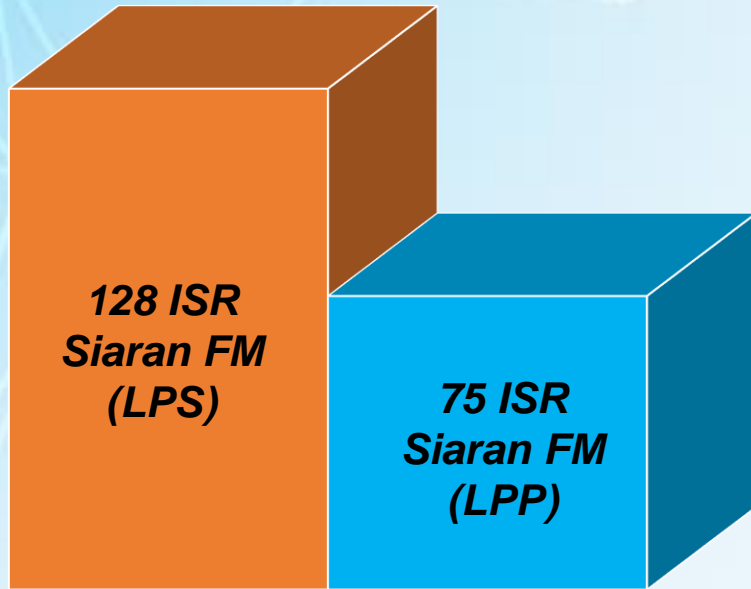
## Coverage Stasiun Radio Siaran FM



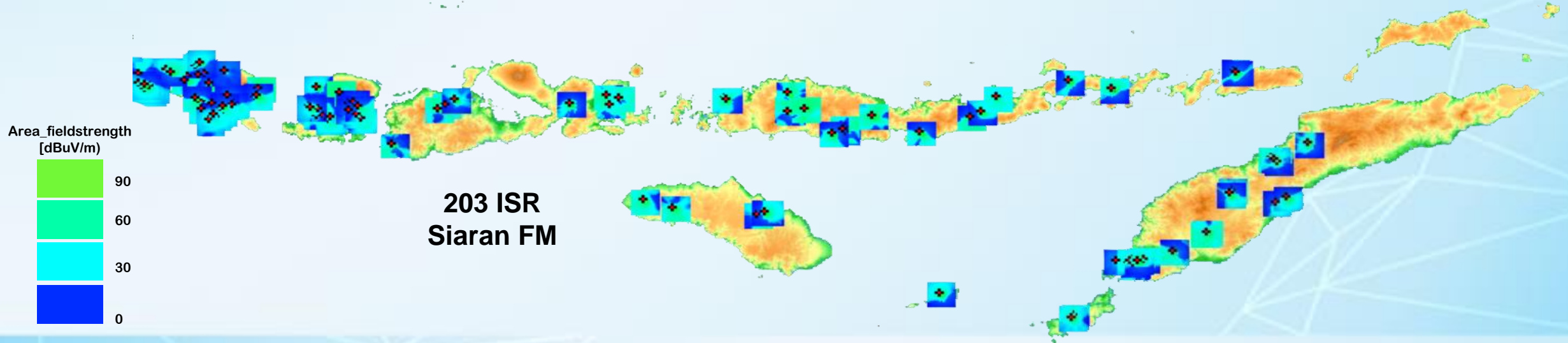
**Utilitas kanal per master plan**

# Bali Nusra

Coverage Stasiun Radio Siaran FM

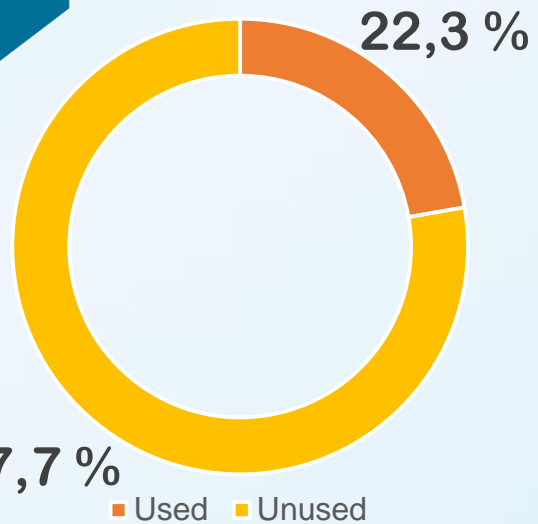
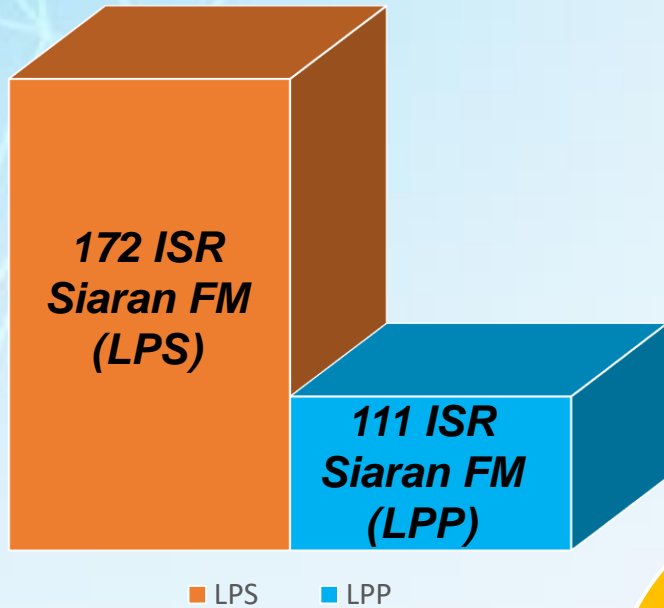


Utilitas kanal per master plan

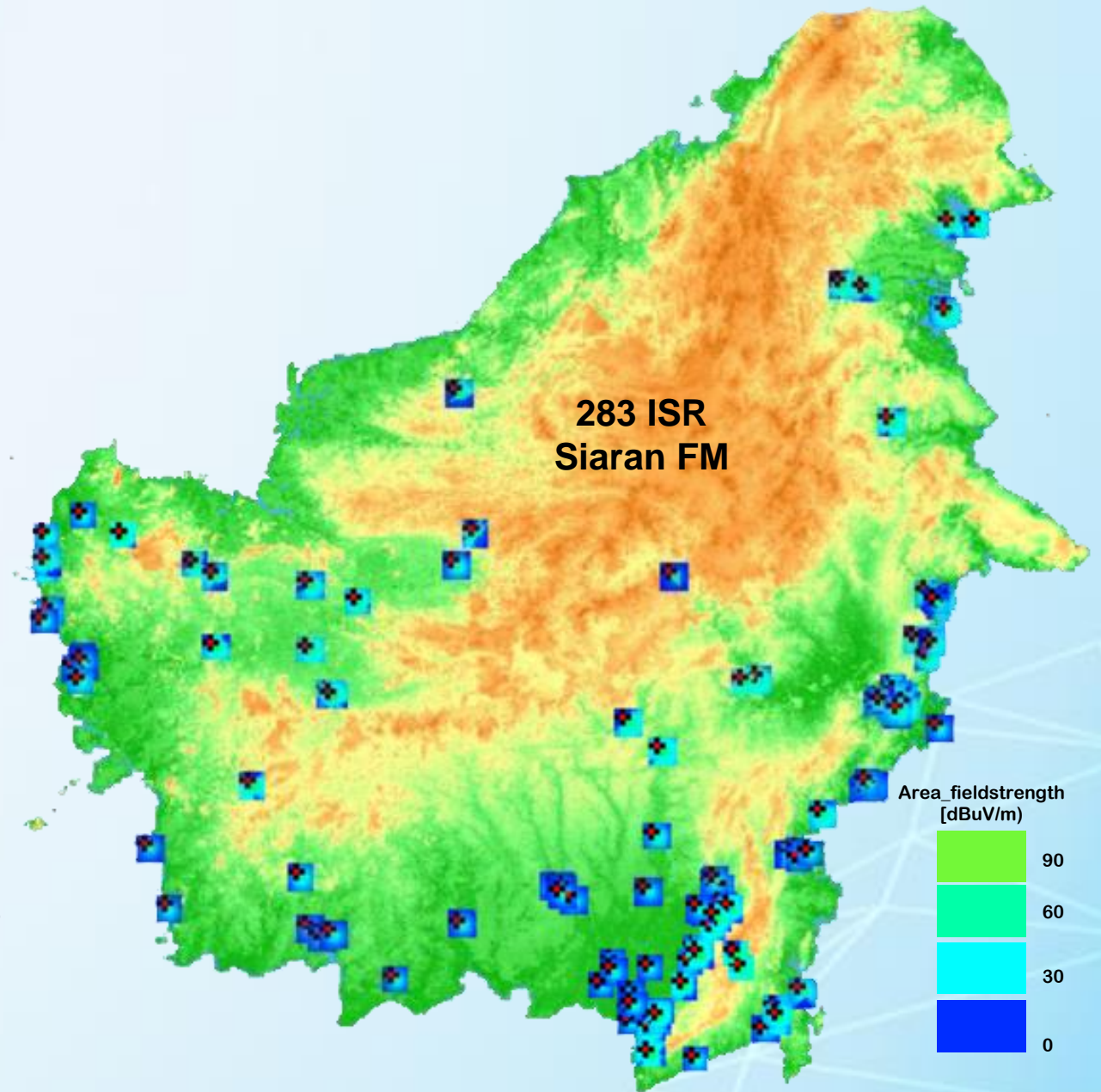


# Kalimantan

## Coverage Stasiun Radio Siaran FM

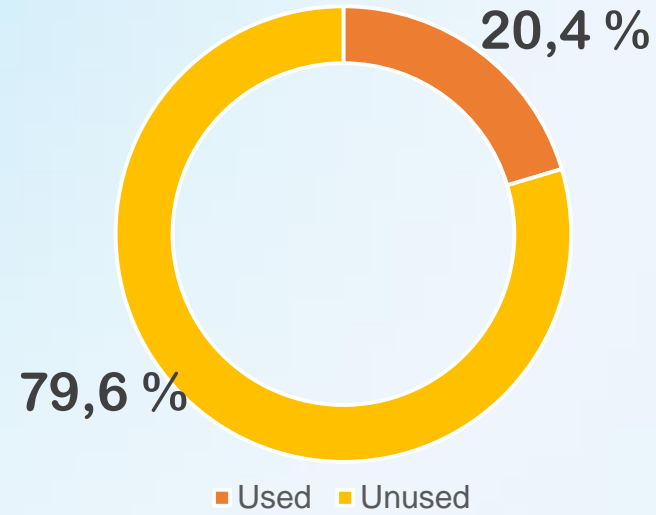


**Utilitas kanal per master plan**

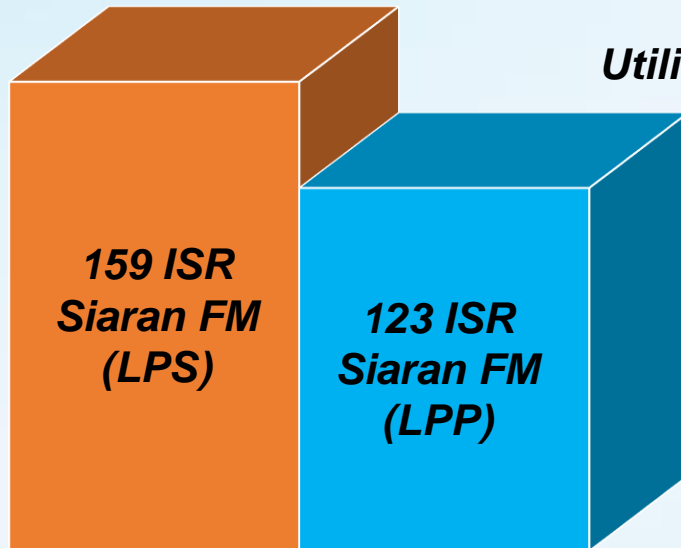


# Sulawesi

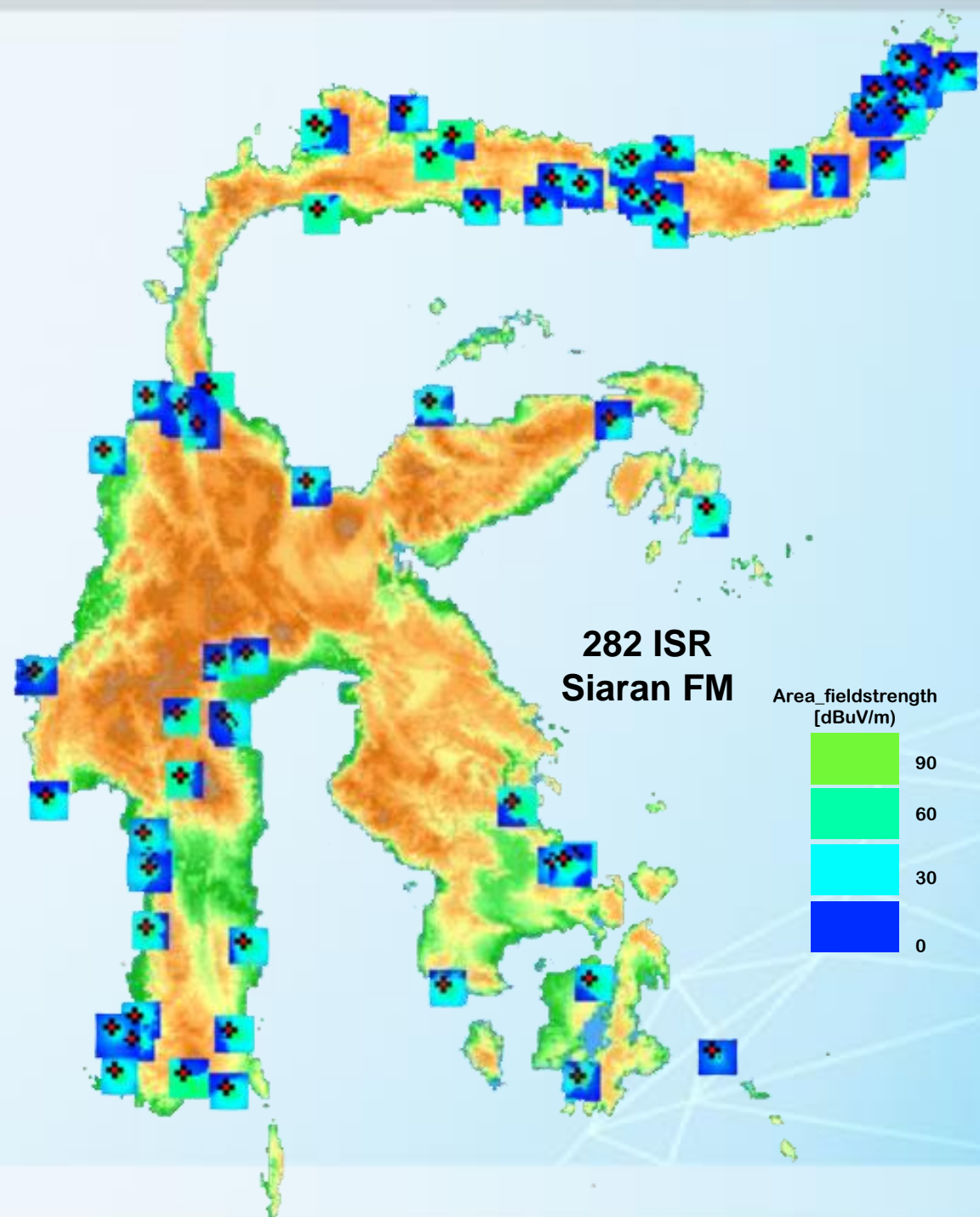
## Coverage Stasiun Radio Siaran FM



*Utilitas kanal per master plan*

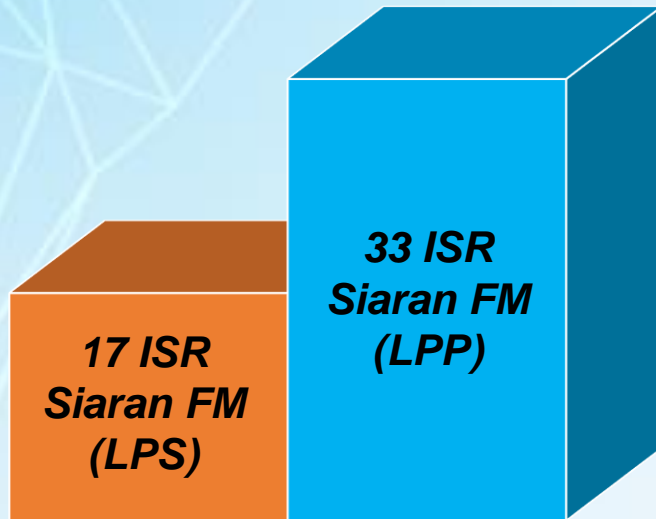


LPS LPP

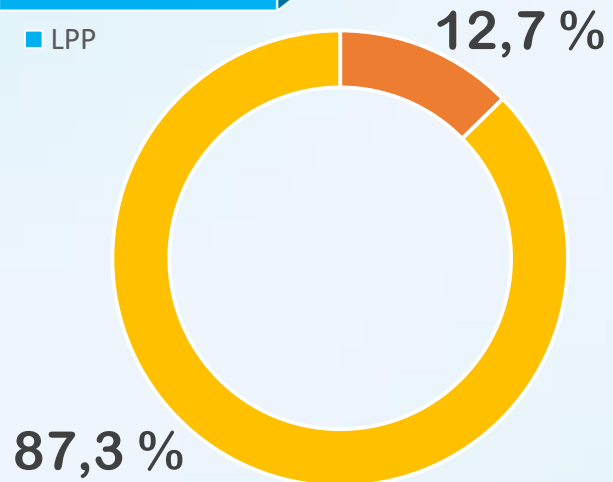


# Maluku

## Coverage Stasiun Radio Siaran FM

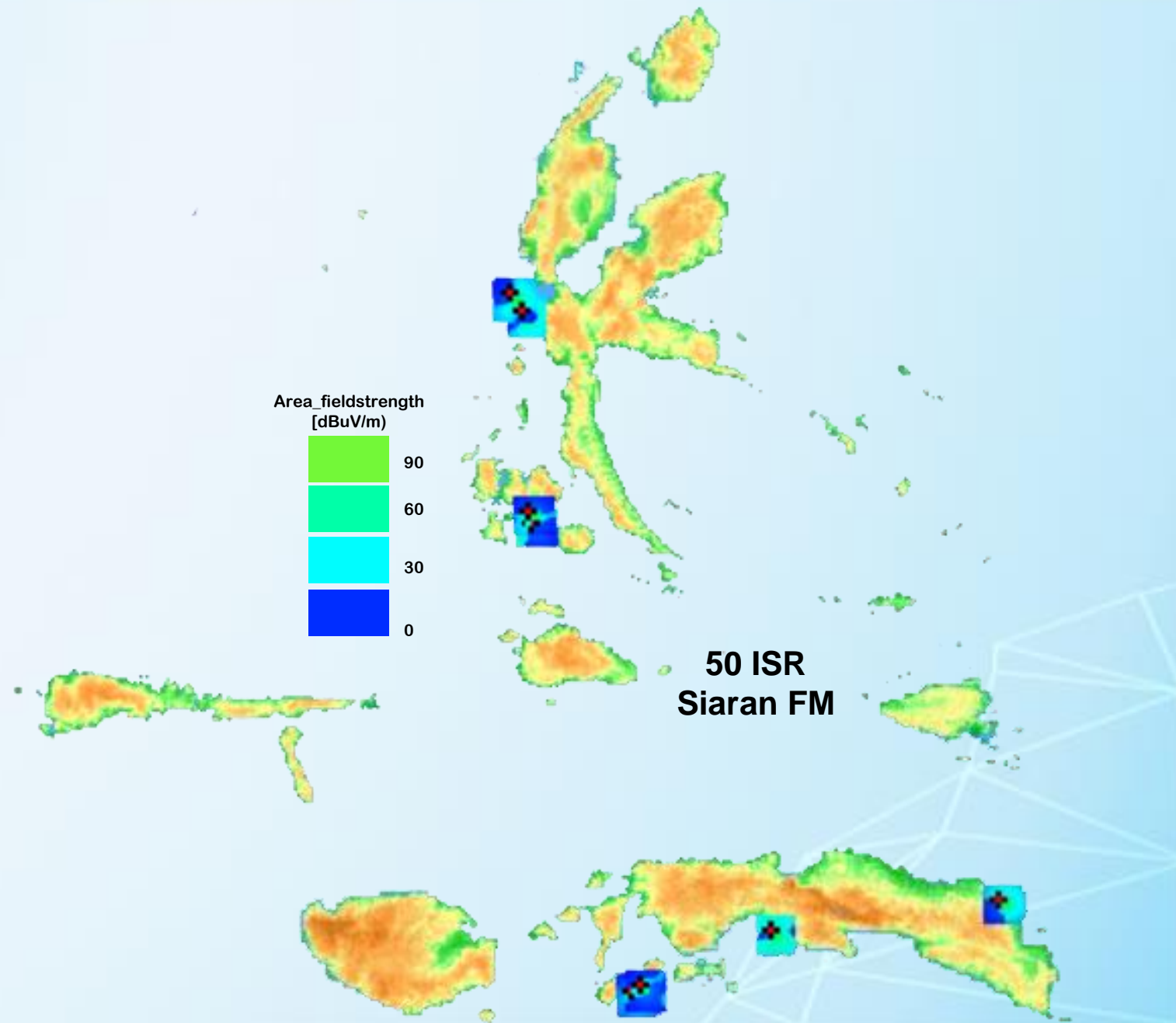


■ LPS ■ LPP



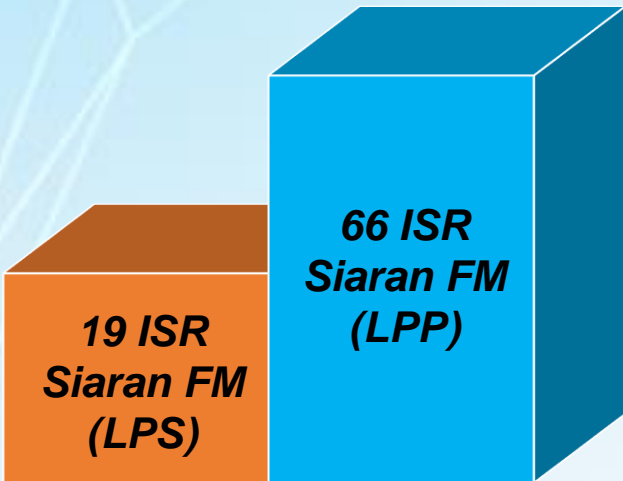
■ Used ■ Unused

**Utilitas kanal per master plan**

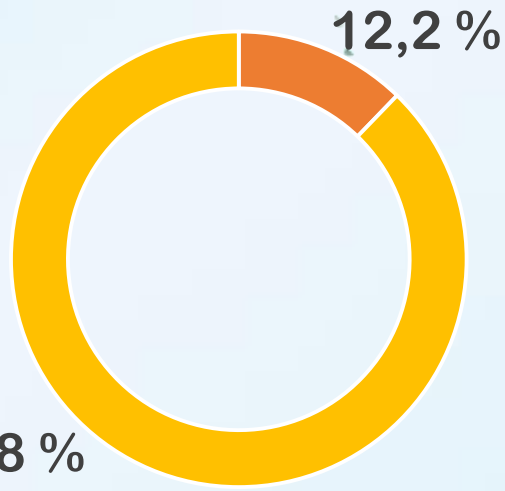
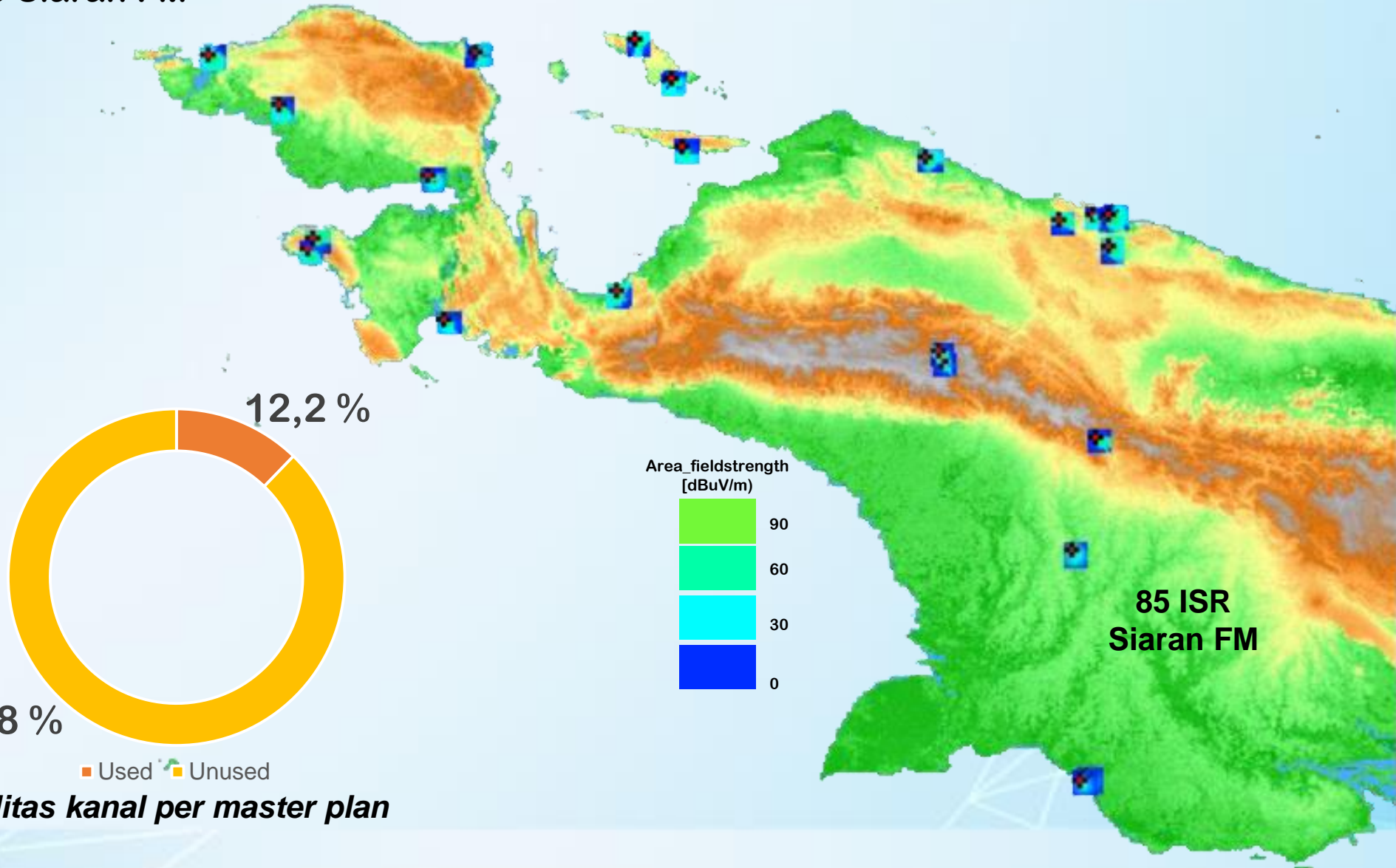


# Papua

## Coverage Stasiun Radio Siaran FM



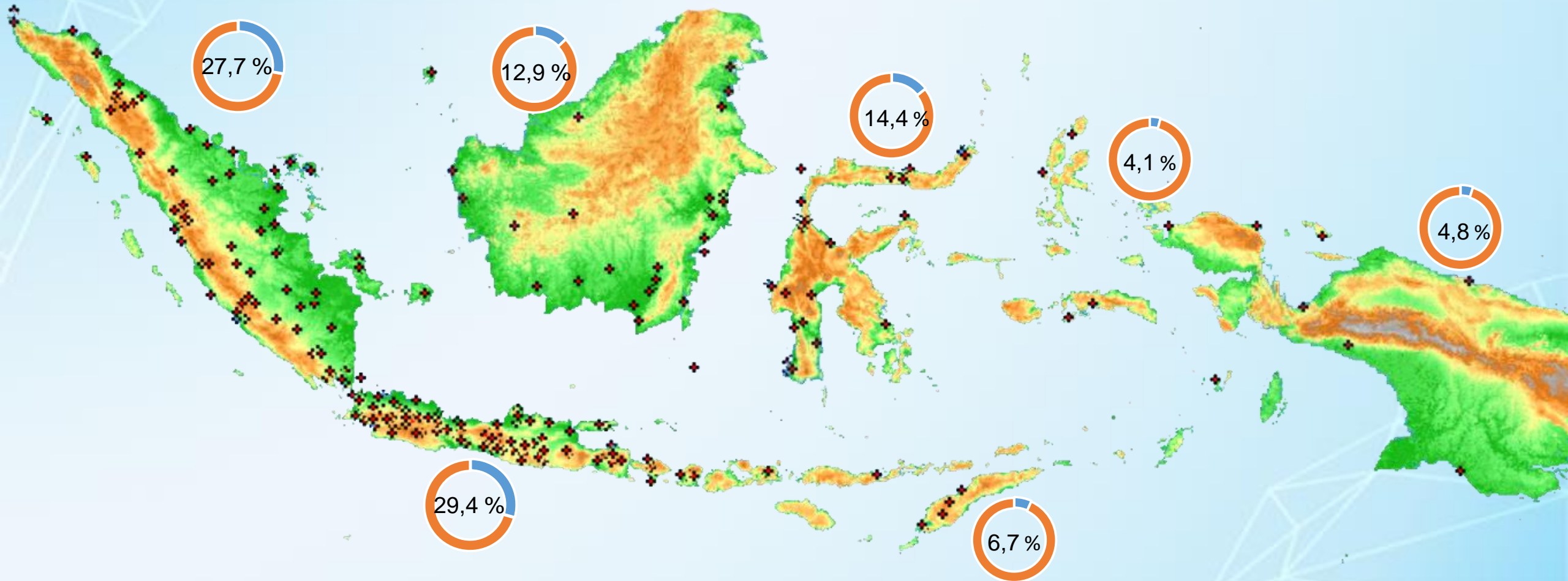
■ LPS ■ LPP



■ Used ■ Unused

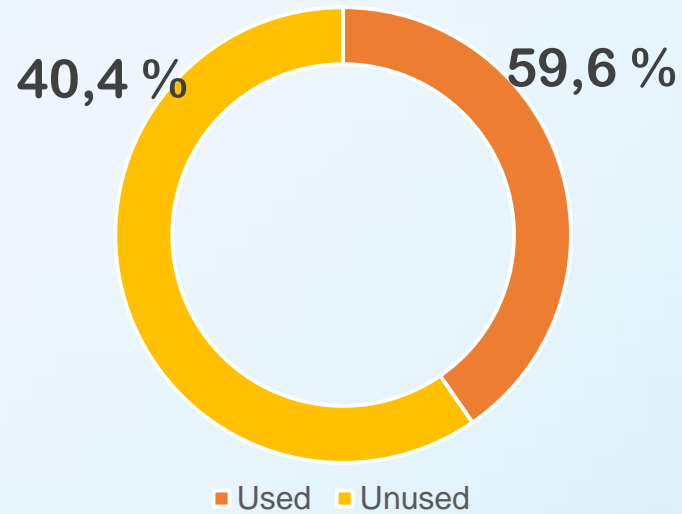
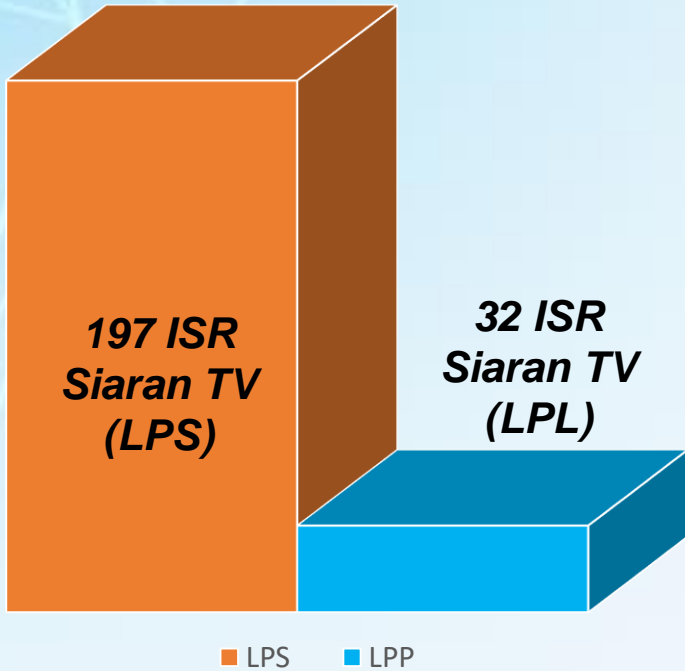
**Utilitas kanal per master plan**

# Peta Sebaran Stasiun Radio Siaran TV Nasional

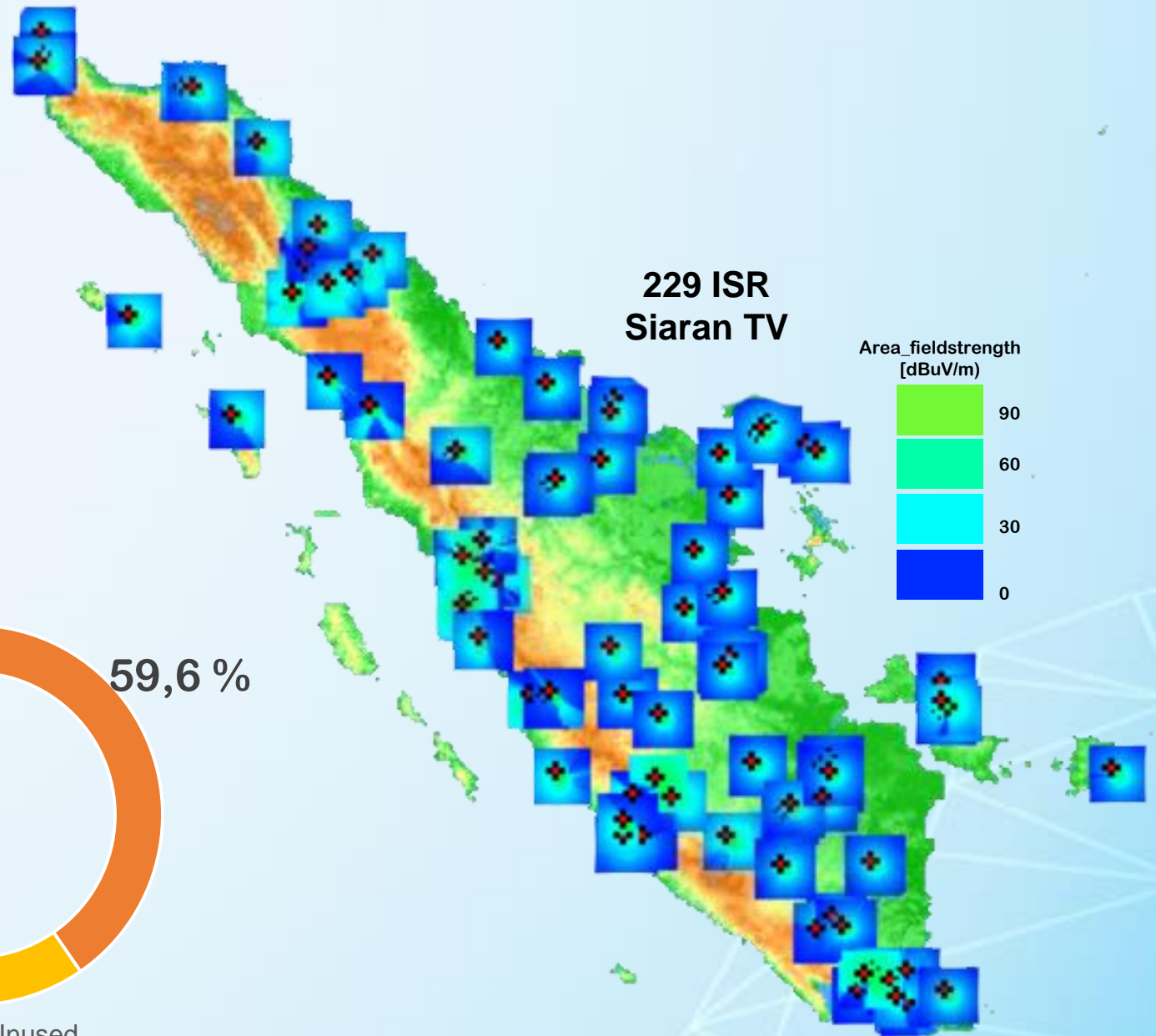


# Sumatera

Coverage Stasiun Radio Siaran TV

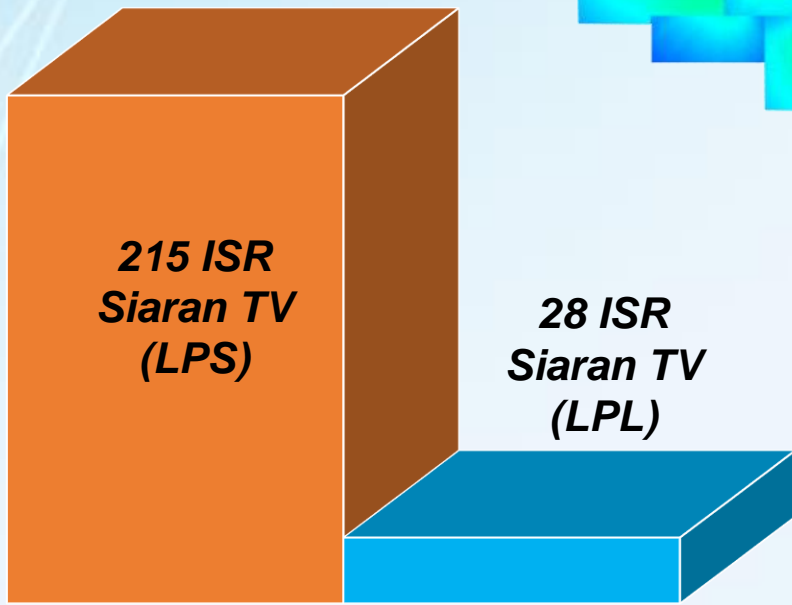
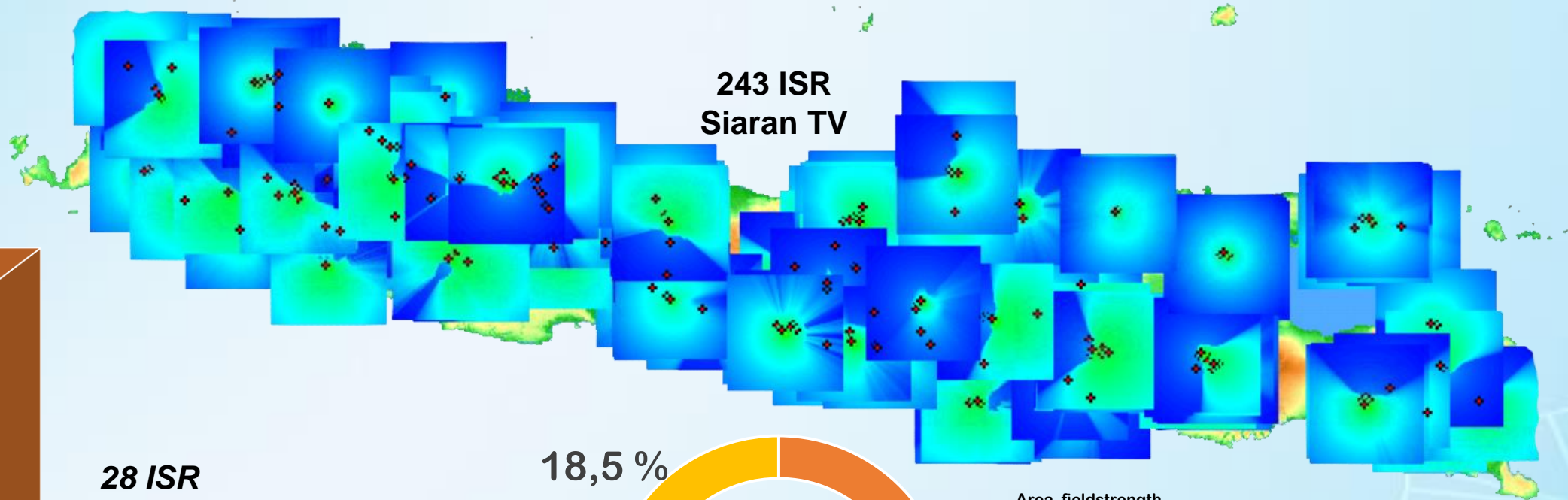


Utilitas kanal per master plan

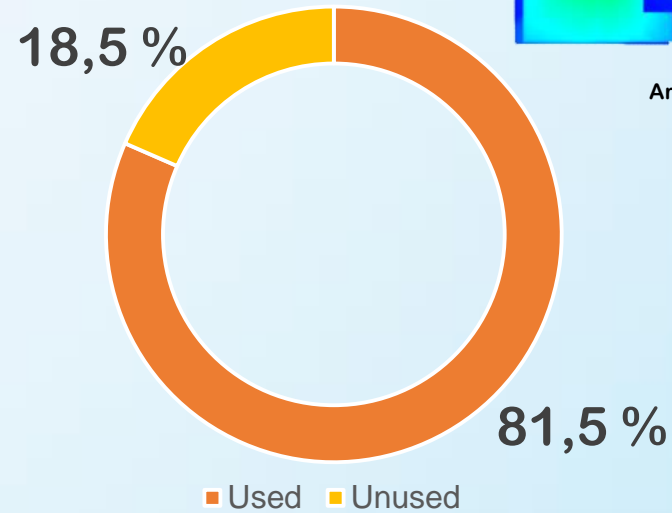


# Jawa

## Coverage Stasiun Radio Siaran TV

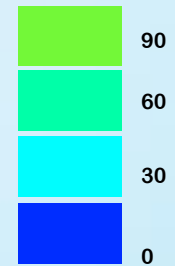


■ LPS ■ LPL



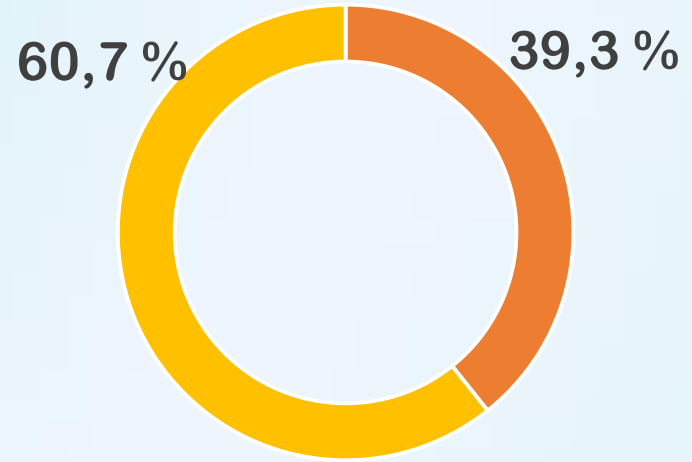
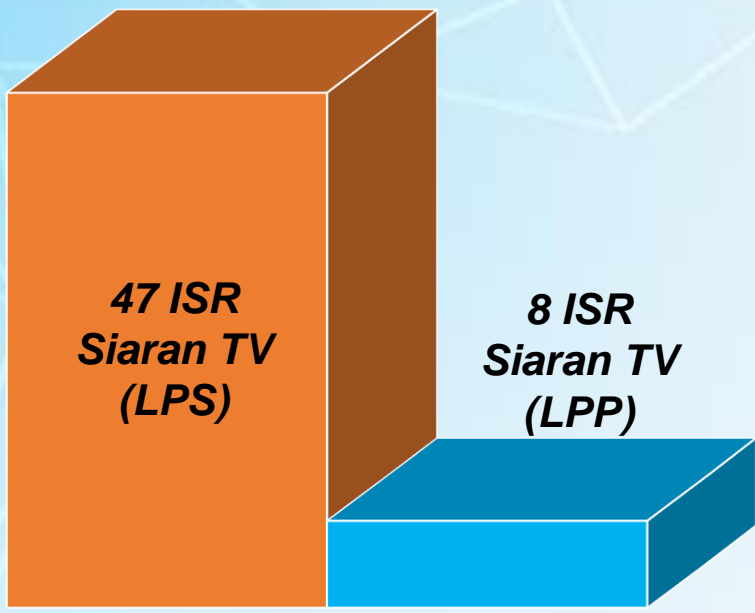
**Utilitas kanal per master plan**

Area\_fieldstrength [dBuV/m]

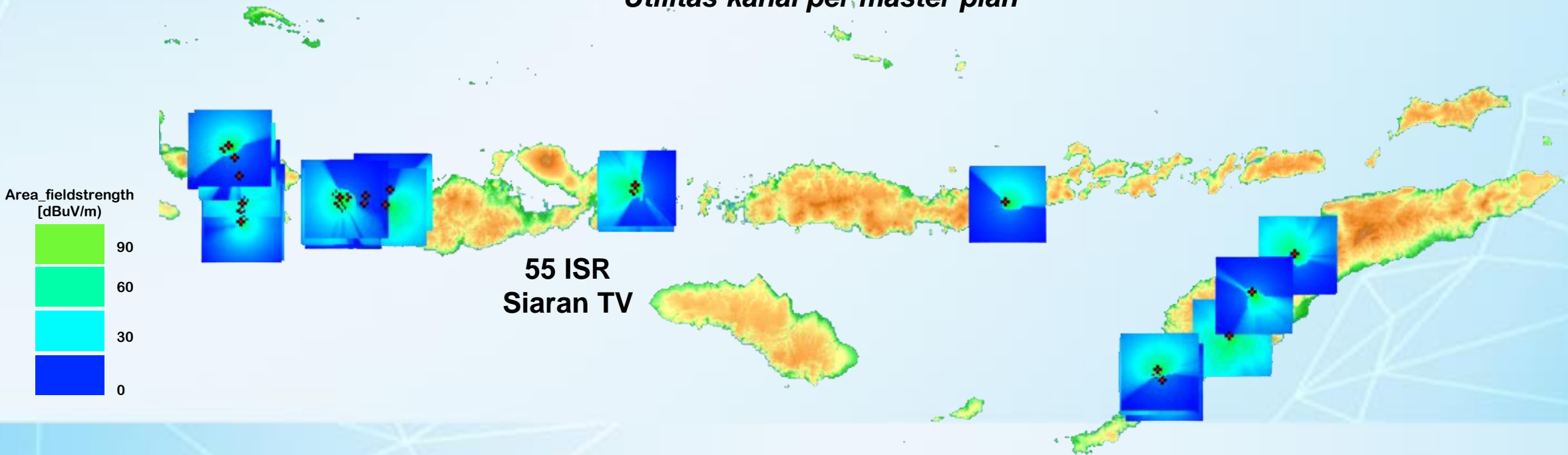


# Bali Nusra

Coverage Stasiun Radio Siaran TV

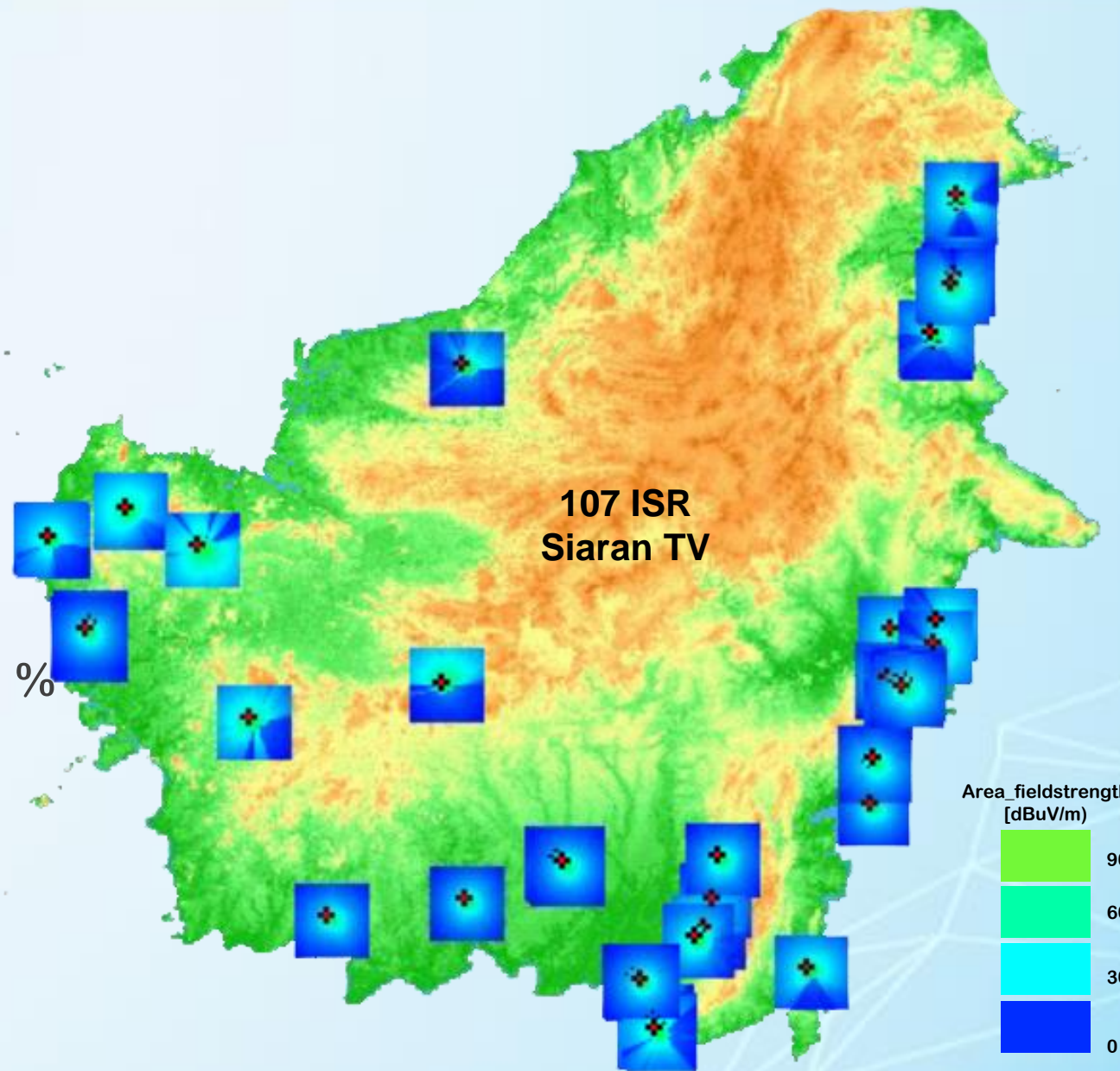
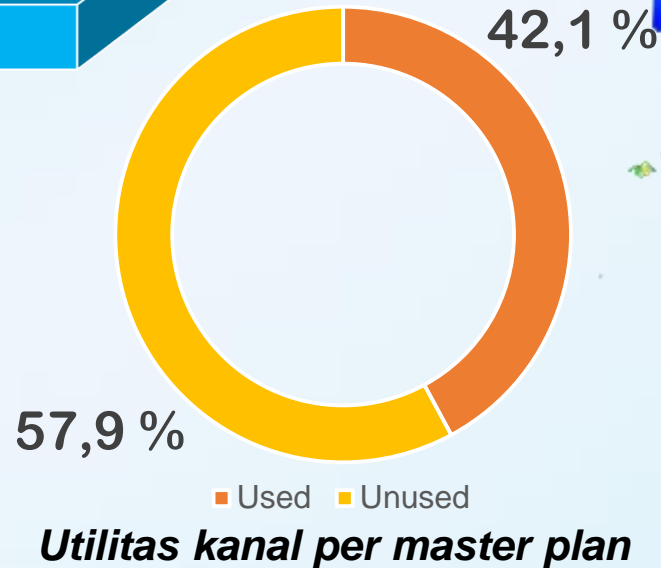
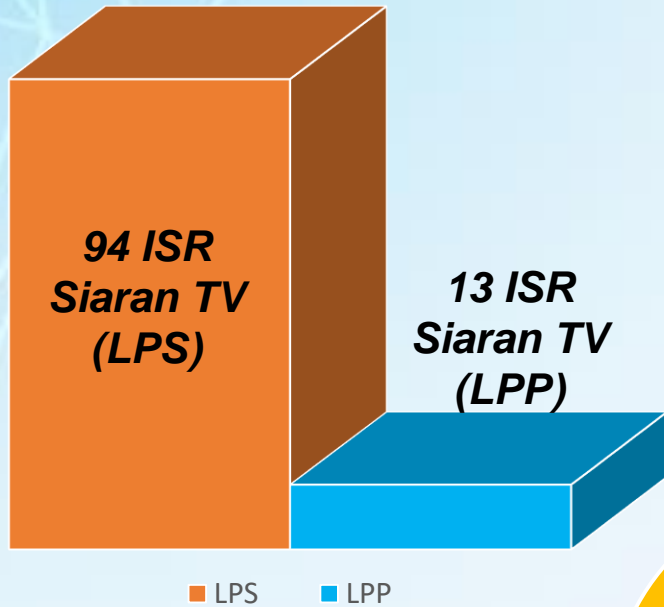


*Utilitas kanal per master plan*



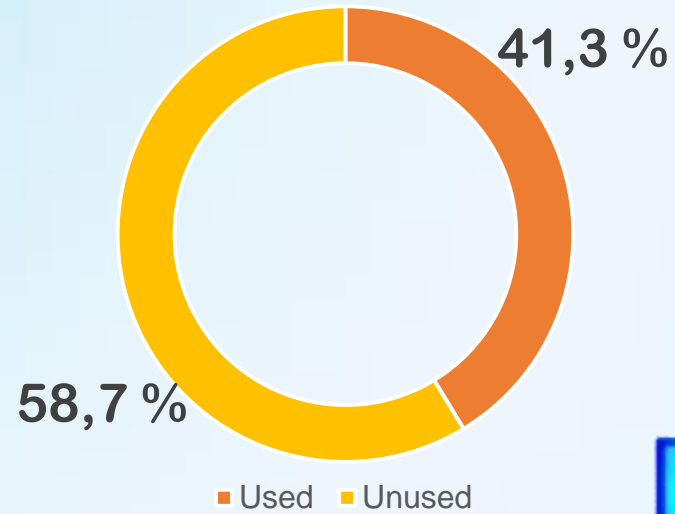
# Kalimantan

## Coverage Stasiun Radio Siaran TV

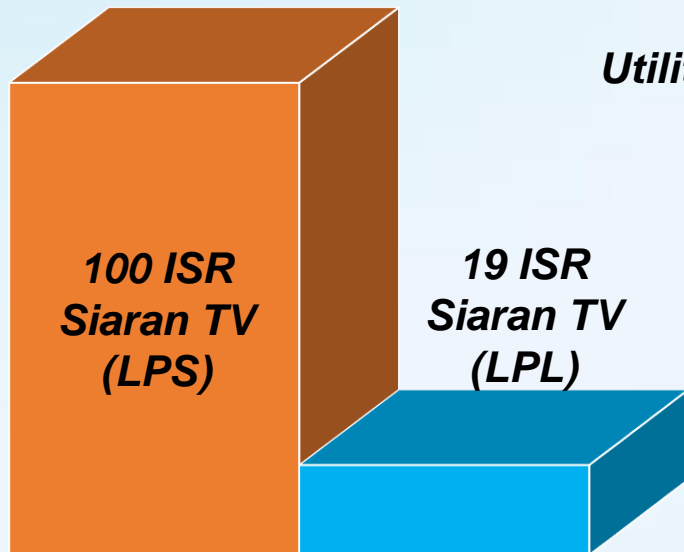


# Sulawesi

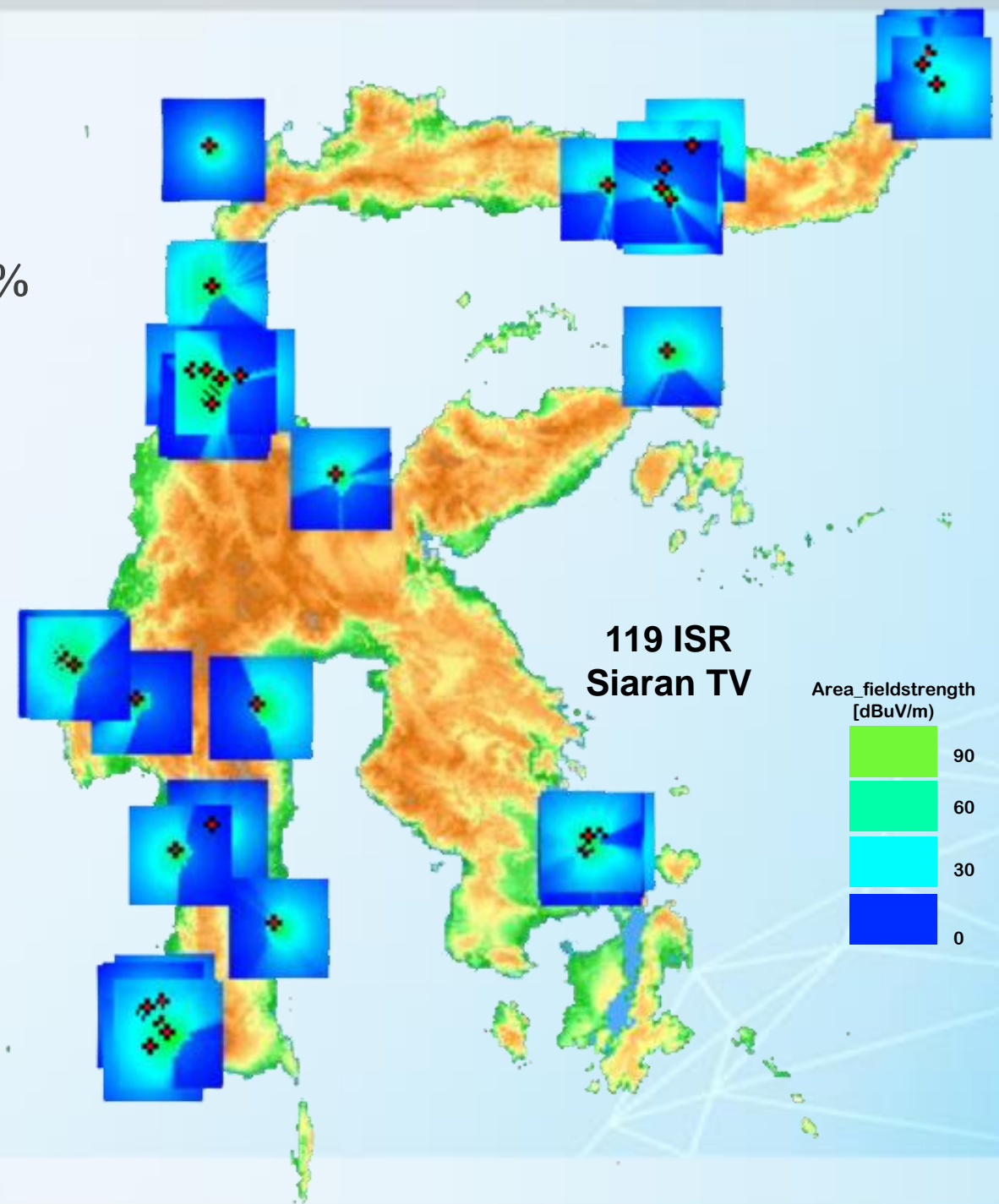
Coverage Stasiun Radio Siaran TV



*Utilitas kanal per master plan*

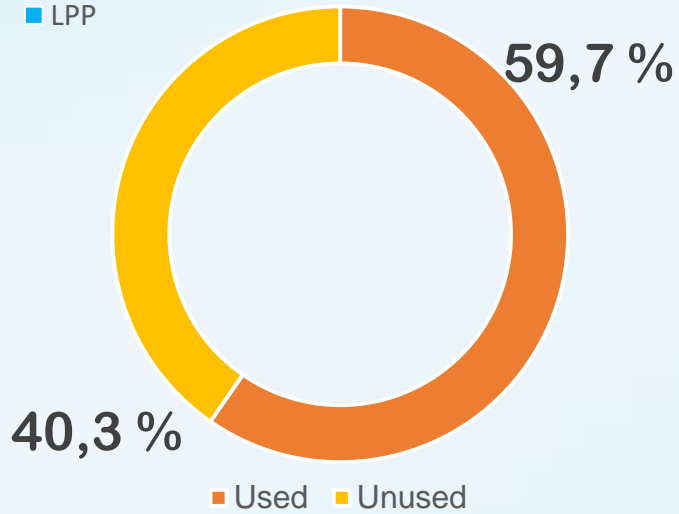
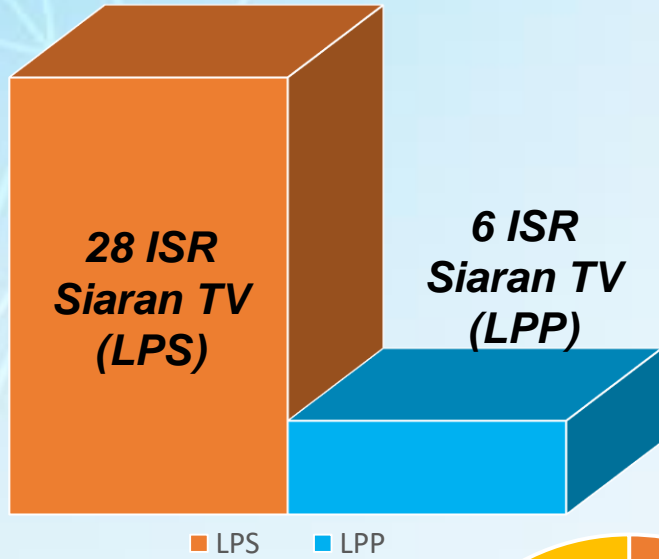


LPS LPP

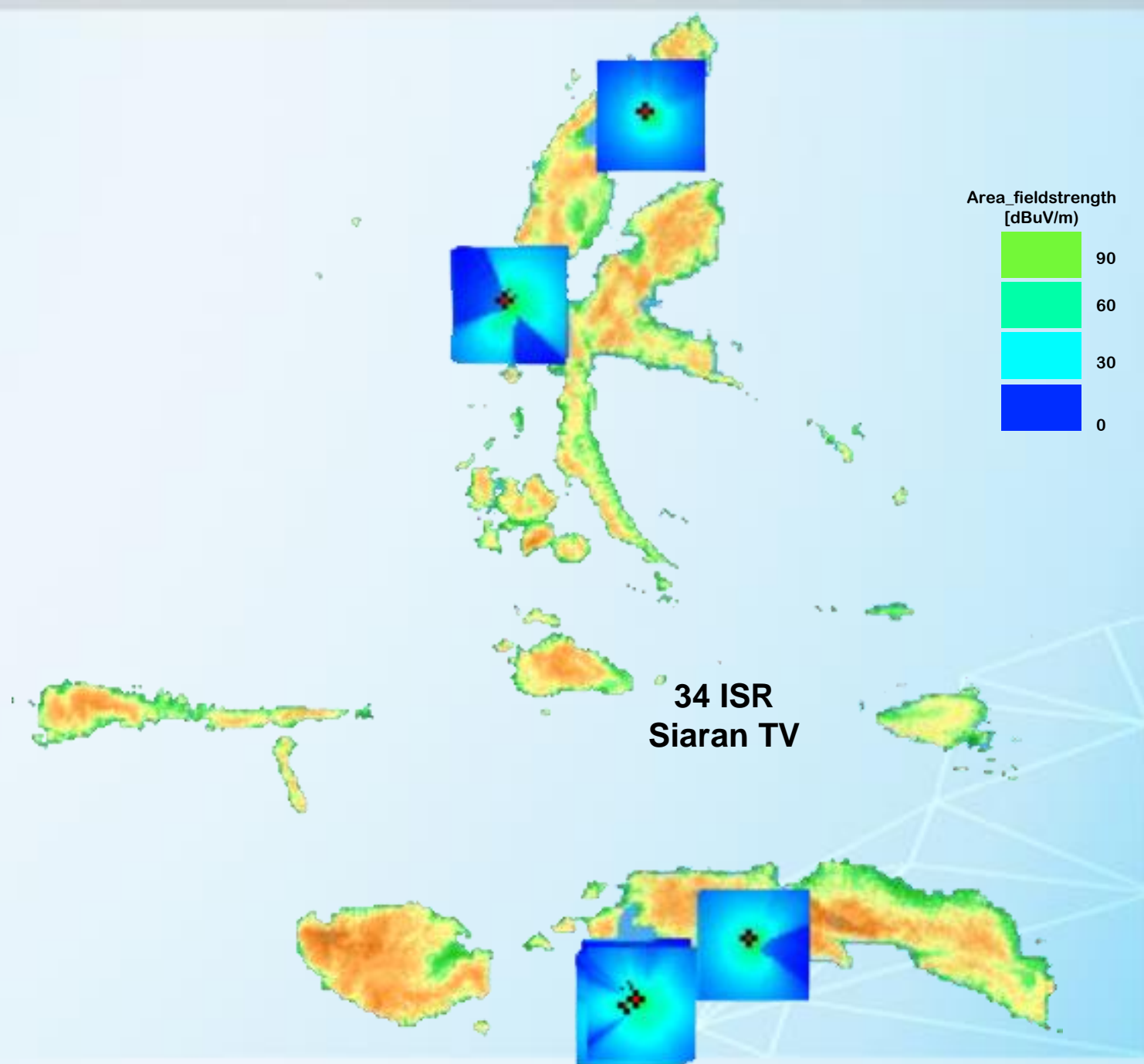


# Maluku

## Coverage Stasiun Radio Siaran TV

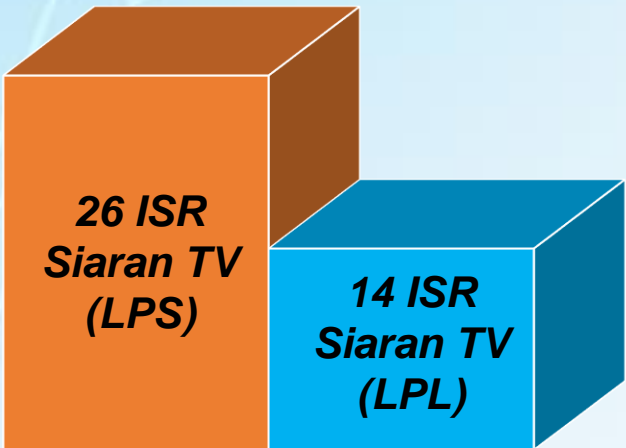
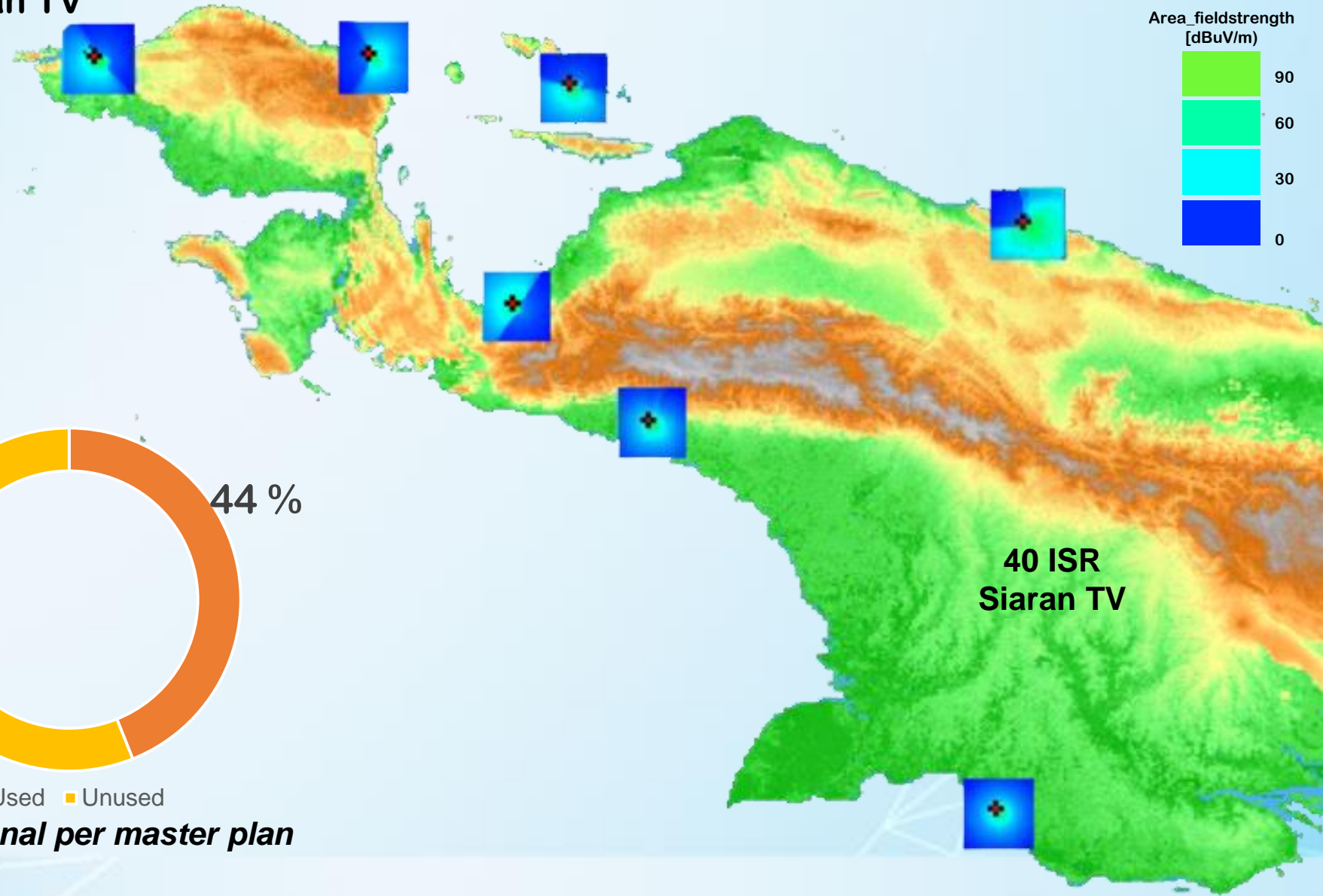
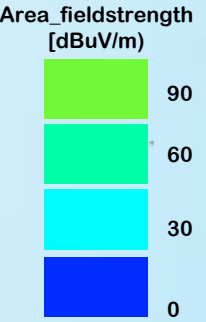


Utilitas kanal per master plan

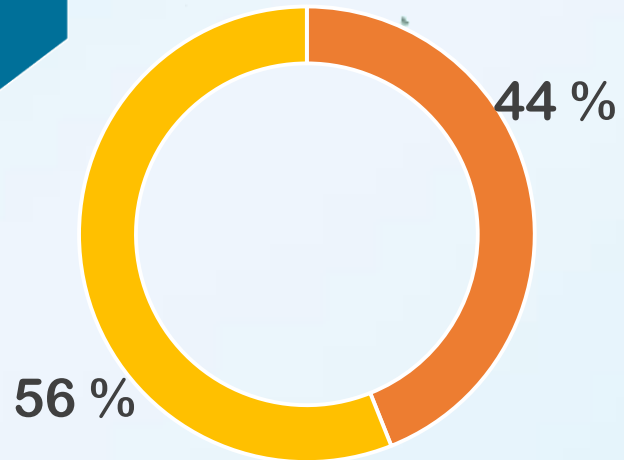


# Papua

## Coverage Stasiun Radio Siaran TV



■ LPS ■ LPL



■ Used ■ Unused

**Utilitas kanal per master plan**



**KOMINFO**

**Direktorat Operasi Sumber Daya**  
Gedung Menara Merdeka Lt. 11  
Jl. Budi Kemuliaan I No. 2 Jakarta 10110

Contact Center : 021-30003100

Email : [izinfrekuensi@postel.go.id](mailto:izinfrekuensi@postel.go.id)

Web : [www.kominfo.go.id](http://www.kominfo.go.id) / [www.postel.go.id](http://www.postel.go.id)

